

IHCeasy[®] FEM1B Ready-To-Use IHC Kit

Catalog Number: **KHC3022**

General Information

Sample type:
FFPE tissue
Cited sample type:
Reactivity:
Human, Mouse, Rat
Cited Reactivity:

Assay type:
Immunohistochemistry
Primary antibody type:
Rabbit Recombinant
Secondary antibody type:
Polymer-HRP-Goat anti-Rabbit

Kit Component

Component	Size	Concentration
Antigen Retrieval Buffer	100 mL	50×
Washing Buffer	100 mL ×2	20×
Blocking Buffer	5 mL	RTU
Primary Antibody	5 mL	RTU
Secondary Antibody	5 mL	RTU
Chromogen Component A	0.2 mL	RTU
Chromogen Component B	4 mL	RTU
Signal Enhancer	5 mL	RTU
Counter Staining Reagent	5 mL	RTU
Mounting Media	5 mL	RTU
Control Slide	1 slide (Optional)	FFPE
Datasheet	1 Copy	
Manual	1 Copy	

Storage Instructions

All the reagents are stored at 2-8°C. The kit is stable for 6 months from the date of receipt.

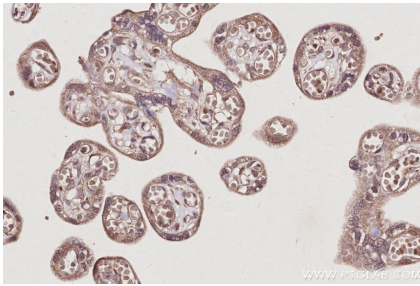
Background

FEM1B, also named F1AA and KIAA0396, belongs to the fem-1 family. FEM1B is a component of an E3 ubiquitin-protein ligase complex, in which it may act as a substrate recognition subunit. FEM1B is involved in apoptosis by acting as a death receptor-associated protein that mediates apoptosis. It is involved in glucose homeostasis in pancreatic islets.

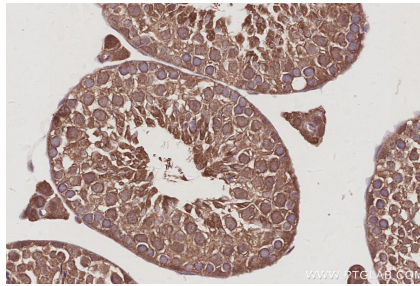
Synonyms

F1A alpha, F1AA, F1A-alpha, fem 1 homolog b (C. elegans), FEM1 beta

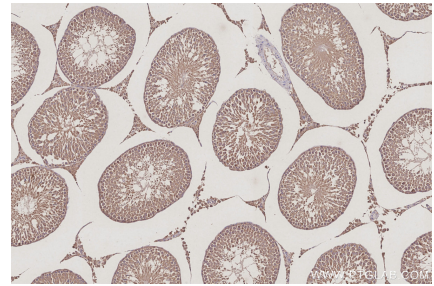
Selected Validation Data



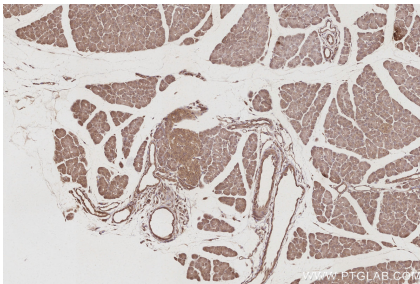
Immunohistochemical analysis of paraffin-embedded human placenta tissue slide using KHC3022 (FEM1B IHC Kit).



Immunohistochemical analysis of paraffin-embedded mouse testis tissue slide using KHC3022 (FEM1B IHC Kit).



Immunohistochemical analysis of paraffin-embedded rat testis tissue slide using KHC3022 (FEM1B IHC Kit).



Immunohistochemical analysis of paraffin-embedded rat pancreas tissue slide using KHC3022 (FEM1B IHC Kit).