

# IHCeasy<sup>®</sup> TBK1 Ready-To-Use IHC Kit

Catalog Number: **KHC3008**

## General Information

Sample type:  
FFPE tissue  
Cited sample type:  
Reactivity:  
Human, Mouse, Rat  
Cited Reactivity:

Assay type:  
Immunohistochemistry  
Primary antibody type:  
Rabbit Recombinant  
Secondary antibody type:  
Polymer-HRP-Goat anti-Rabbit

## Kit Component

Component	Size	Concentration
Antigen Retrieval Buffer	100 mL	50×
Washing Buffer	100 mL ×2	20×
Blocking Buffer	5 mL	RTU
Primary Antibody	5 mL	RTU
Secondary Antibody	5 mL	RTU
Chromogen Component A	0.2 mL	RTU
Chromogen Component B	4 mL	RTU
Signal Enhancer	5 mL	RTU
Counter Staining Reagent	5 mL	RTU
Mounting Media	5 mL	RTU
Control Slide	1 slide (Optional)	FFPE
Datasheet	1 Copy	
Manual	1 Copy	

## Storage Instructions

All the reagents are stored at 2-8°C. The kit is stable for 6 months from the date of receipt.

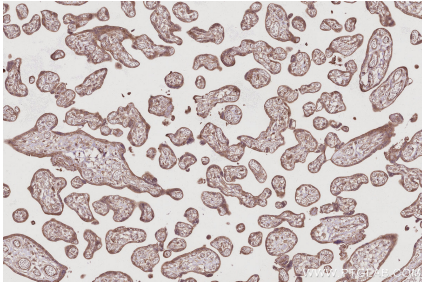
## Background

TBK1, also named as tumor necrosis factor (TNF) receptor-associated factor NF-κB activator (TANK)-binding kinase 1 (TBK1), NF-κB-activating kinase (NAK), T2K, is a multimeric kinase that modulates inflammation and autophagy. It is a ubiquitously expressed serine-threonine kinase belonging to the 'noncanonical IκB kinases' (IKKs) recognized for its critical role in regulating type I IFN production. And TBK1 is an important player in yet another critical cellular function, autophagy.

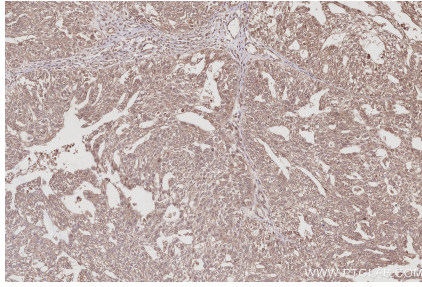
## Synonyms

EC:2.7.11.1, NF kappa B activating kinase, NF-kappa-B-activating kinase, Serine/threonine protein kinase TBK1, Serine/threonine-protein kinase TBK1

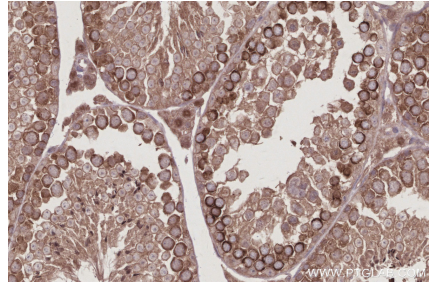
## Selected Validation Data



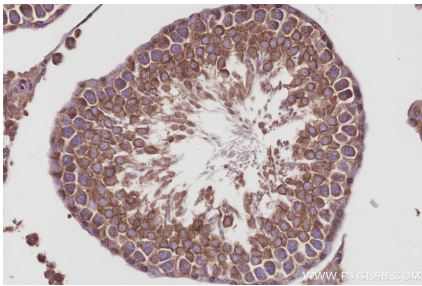
Immunohistochemical analysis of paraffin-embedded human placenta tissue slide using KHC3008 (TBK1 IHC Kit).



Immunohistochemical analysis of paraffin-embedded human ovary cancer tissue slide using KHC3008 (TBK1 IHC Kit).



Immunohistochemical analysis of paraffin-embedded mouse testis tissue slide using KHC3008 (TBK1 IHC Kit).



Immunohistochemical analysis of paraffin-embedded rat testis tissue slide using KHC3008 (TBK1 IHC Kit).