

IHCeasy[®] EPLIN Ready-To-Use IHC Kit

Catalog Number: **KHC3007**

General Information

Sample type:
FFPE tissue
Cited sample type:
Reactivity:
Human, Mouse, Rat
Cited Reactivity:

Assay type:
Immunohistochemistry
Primary antibody type:
Rabbit Polyclonal
Secondary antibody type:
Polymer-HRP-Goat anti-Rabbit

Kit Component

| Component | Size | Concentration |
|--------------------------|--------------------|---------------|
| Antigen Retrieval Buffer | 100 mL | 50× |
| Washing Buffer | 100 mL ×2 | 20× |
| Blocking Buffer | 5 mL | RTU |
| Primary Antibody | 5 mL | RTU |
| Secondary Antibody | 5 mL | RTU |
| Chromogen Component A | 0.2 mL | RTU |
| Chromogen Component B | 4 mL | RTU |
| Signal Enhancer | 5 mL | RTU |
| Counter Staining Reagent | 5 mL | RTU |
| Mounting Media | 5 mL | RTU |
| Control Slide | 1 slide (Optional) | FFPE |
| Datasheet | 1 Copy | |
| Manual | 1 Copy | |

Storage Instructions

All the reagents are stored at 2-8°C. The kit is stable for 6 months from the date of receipt.

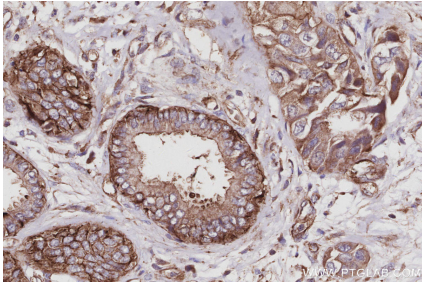
Background

EPLIN is a cytoskeletal protein that is preferentially expressed in epithelial cells and is implicated in regulation of cytoskeletal dynamics and cytokinesis. In human, there are two known isoforms, EPLIN-a and -b, generated by alternative promoter usage from a single gene. EPLIN-a expression is often down-regulated in cancerous cells and tissues.

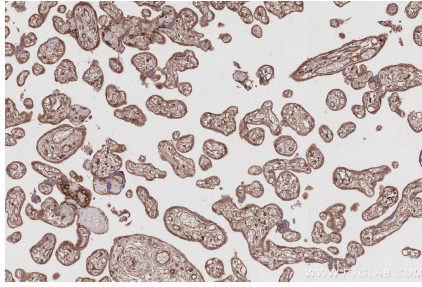
Synonyms

LIMA1, LIM domain and actin binding 1, LIM domain and actin-binding protein 1, PP624, SREBP3

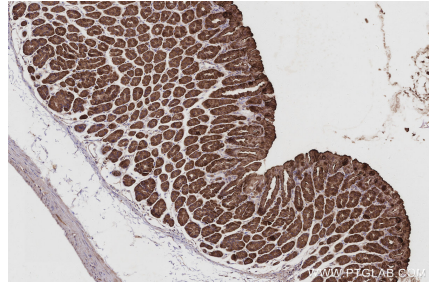
Selected Validation Data



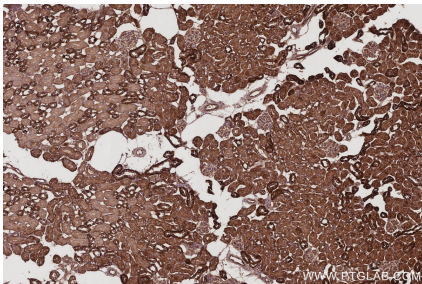
Immunohistochemical analysis of paraffin-embedded human pancreas cancer tissue slide using KHC3007 (EPLIN IHC Kit).



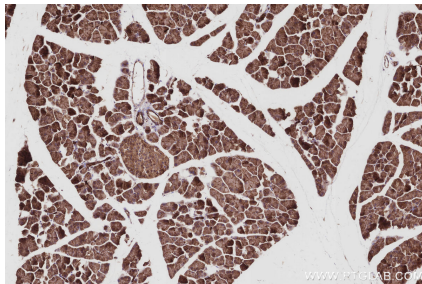
Immunohistochemical analysis of paraffin-embedded human placenta tissue slide using KHC3007 (EPLIN IHC Kit).



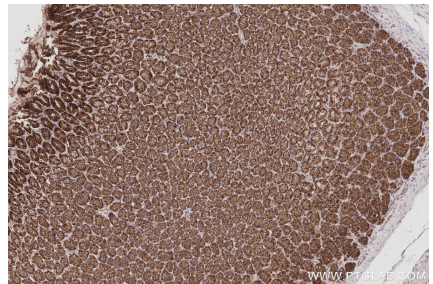
Immunohistochemical analysis of paraffin-embedded mouse stomach tissue slide using KHC3007 (EPLIN IHC Kit).



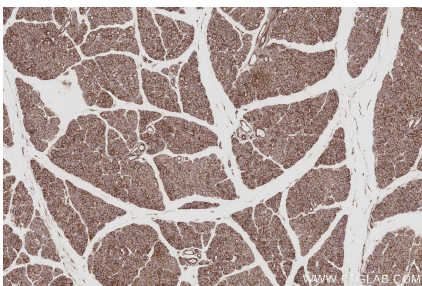
Immunohistochemical analysis of paraffin-embedded mouse kidney tissue slide using KHC3007 (EPLIN IHC Kit).



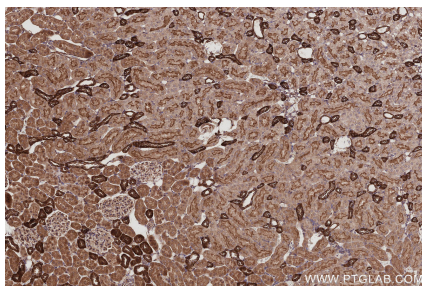
Immunohistochemical analysis of paraffin-embedded mouse pancreas tissue slide using KHC3007 (EPLIN IHC Kit).



Immunohistochemical analysis of paraffin-embedded rat stomach tissue slide using KHC3007 (EPLIN IHC Kit).



Immunohistochemical analysis of paraffin-embedded rat pancreas tissue slide using KHC3007 (EPLIN IHC Kit).



Immunohistochemical analysis of paraffin-embedded rat kidney tissue slide using KHC3007 (EPLIN IHC Kit).