

IHCeasy[®] SWAP70 Ready-To-Use IHC Kit

Catalog Number: **KHC3006**

General Information

Sample type:
FFPE tissue
Cited sample type:
Reactivity:
Human, Mouse, Rat
Cited Reactivity:

Assay type:
Immunohistochemistry
Primary antibody type:
Rabbit Polyclonal
Secondary antibody type:
Polymer-HRP-Goat anti-Rabbit

Kit Component

Component	Size	Concentration
Antigen Retrieval Buffer	100 mL	50×
Washing Buffer	100 mL ×2	20×
Blocking Buffer	5 mL	RTU
Primary Antibody	5 mL	RTU
Secondary Antibody	5 mL	RTU
Chromogen Component A	0.2 mL	RTU
Chromogen Component B	4 mL	RTU
Signal Enhancer	5 mL	RTU
Counter Staining Reagent	5 mL	RTU
Mounting Media	5 mL	RTU
Control Slide	1 slide (Optional)	FFPE
Datasheet	1 Copy	
Manual	1 Copy	

Storage Instructions

All the reagents are stored at 2-8°C. The kit is stable for 6 months from the date of receipt.

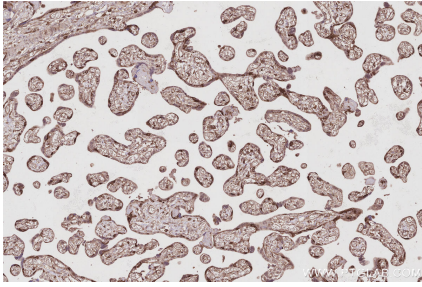
Background

SWAP70 (switching B cell complex subunit), also known as HSPC321. It is expected to be located in cell membrane, cytoplasm and nucleus, the protein is mainly expressed in spleen, and fairly abundant in kidney, lung and liver. Also found in monocytes, macrophages and mature B-cells. SWAP-70 is a component of an enzyme complex that recombines Ig switch regions in vitro. It is reported that the cloning of the human cDNA and its B lymphocyte-specific expression. Although its sequence contains three nuclear localization signals, in small resting B cells, SWAP-70 is mainly found in the cytoplasm. On stimulation, SWAP-70 translocates to the nucleus. In activated, class-switching B cell cultures, it is associated with membrane IgG, but not IgM. The membrane Ig association requires a functional pleckstrin homology domain and is controlled by the C terminus. It is suggested that SWAP-70 is involved not only in nuclear events but also in signaling in B cell activation.

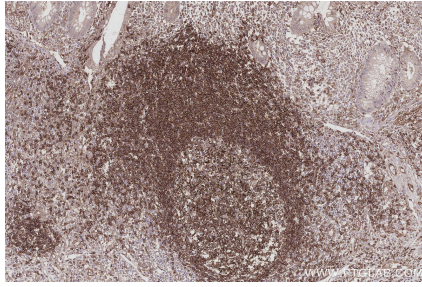
Synonyms

HSPC321, KIAA0640, SWAP 70, SWAP 70 protein, SWAP-70

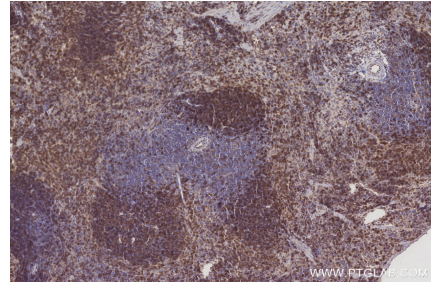
Selected Validation Data



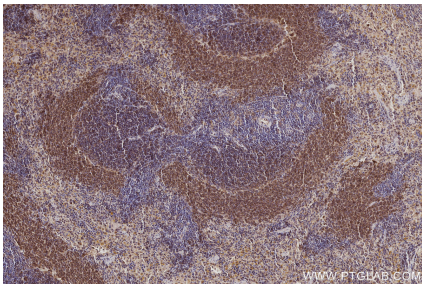
Immunohistochemical analysis of paraffin-embedded human placenta tissue slide using KHC3006 (SWAP70 IHC Kit).



Immunohistochemical analysis of paraffin-embedded human appendicitis tissue slide using KHC3006 (SWAP70 IHC Kit).



Immunohistochemical analysis of paraffin-embedded mouse spleen tissue slide using KHC3006 (SWAP70 IHC Kit).



Immunohistochemical analysis of paraffin-embedded rat spleen tissue slide using KHC3006 (SWAP70 IHC Kit).