

IHCeasy[®] SPAST Ready-To-Use IHC Kit

Catalog Number: **KHC3000**

General Information

Sample type:
FFPE tissue
Cited sample type:
Reactivity:
Human, Mouse, Rat
Cited Reactivity:

Assay type:
Immunohistochemistry
Primary antibody type:
Mouse Monoclonal
Secondary antibody type:
Polymer-HRP-Goat anti-Mouse

Kit Component

Component	Size	Concentration
Antigen Retrieval Buffer	100 mL	50×
Washing Buffer	100 mL ×2	20×
Blocking Buffer	5 mL	RTU
Primary Antibody	5 mL	RTU
Secondary Antibody	5 mL	RTU
Chromogen Component A	0.2 mL	RTU
Chromogen Component B	4 mL	RTU
Signal Enhancer	5 mL	RTU
Counter Staining Reagent	5 mL	RTU
Mounting Media	5 mL	RTU
Control Slide	1 slide (Optional)	FFPE
Datasheet	1 Copy	
Manual	1 Copy	

Storage Instructions

All the reagents are stored at 2-8°C. The kit is stable for 6 months from the date of receipt.

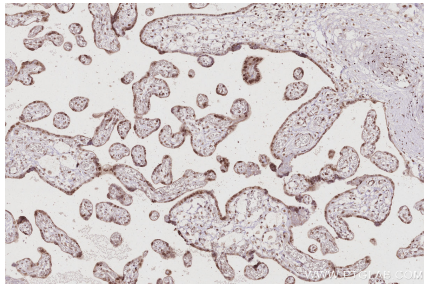
Background

SPAST encodes a microtubule-severing protein called spastin. By severing microtubules into small segments, SPAST participates in the regeneration of neurites. Mutations in the SPAST gene (previously known as SPG4) are the most common causes of hereditary spastic paraplegia (HSP-SPG4).

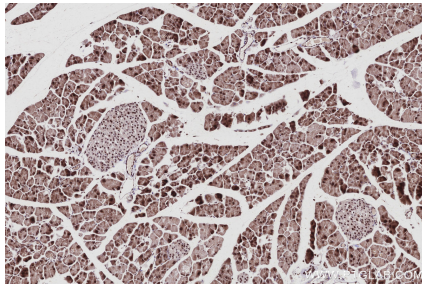
Synonyms

EC:5.6.1.1, spastin

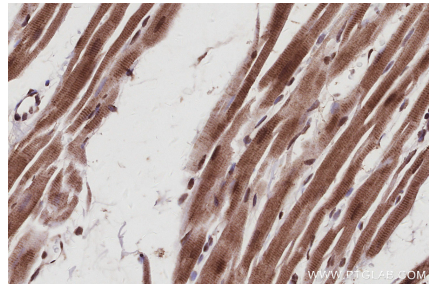
Selected Validation Data



Immunohistochemical analysis of paraffin-embedded human placenta tissue slide using KHC3000 (SPAST IHC Kit).



Immunohistochemical analysis of paraffin-embedded mouse pancreas tissue slide using KHC3000 (SPAST IHC Kit).



Immunohistochemical analysis of paraffin-embedded rat heart tissue slide using KHC3000 (SPAST IHC Kit).