

IHCeasy[®] PIM2 Ready-To-Use IHC Kit

Catalog Number: **KHC2989**

General Information

Sample type:
FFPE tissue
Cited sample type:
Reactivity:
Human, Mouse, Rat
Cited Reactivity:

Assay type:
Immunohistochemistry
Primary antibody type:
Rabbit Polyclonal
Secondary antibody type:
Polymer-HRP-Goat anti-Rabbit

Kit Component

Component	Size	Concentration
Antigen Retrieval Buffer	100 mL	50×
Washing Buffer	100 mL ×2	20×
Blocking Buffer	5 mL	RTU
Primary Antibody	5 mL	RTU
Secondary Antibody	5 mL	RTU
Chromogen Component A	0.2 mL	RTU
Chromogen Component B	4 mL	RTU
Signal Enhancer	5 mL	RTU
Counter Staining Reagent	5 mL	RTU
Mounting Media	5 mL	RTU
Control Slide	1 slide (Optional)	FFPE
Datasheet	1 Copy	
Manual	1 Copy	

Storage Instructions

All the reagents are stored at 2-8°C. The kit is stable for 6 months from the date of receipt.

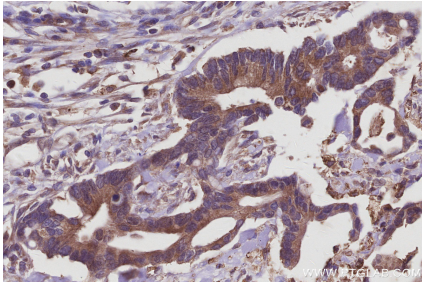
Background

PIM2 was first identified in T and B cell lymphomas in mice and is a member of a serine/threonine kinase family of proto-oncogenes, which also includes PIM1 and PIM3. They share high sequence homology at the amino acid level; PIM1 and PIM2 are 61% identical and PIM1 and PIM3 are 71% identical. The PIM2 protein plays an important role in promoting cell survival and preventing apoptosis. PIM2 is mainly expressed in lymphoid and brain tissues.

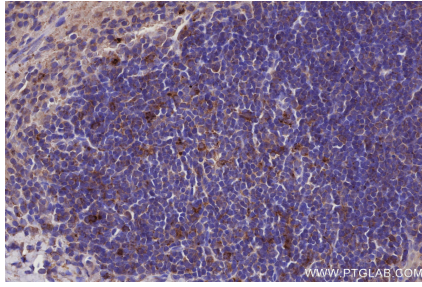
Synonyms

EC:2.7.11.1, pim 2 oncogene, Pim 2h, Pim-2h, Serine/threonine-protein kinase pim-2

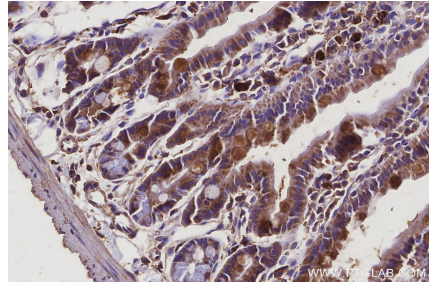
Selected Validation Data



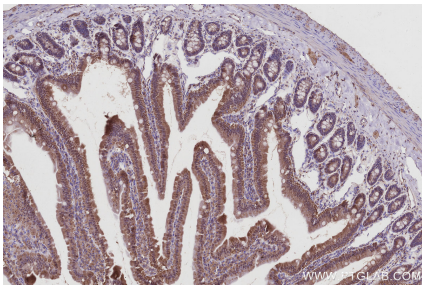
Immunohistochemical analysis of paraffin-embedded human rectal cancer tissue slide using KHC2989 (PIM2 IHC Kit).



Immunohistochemical analysis of paraffin-embedded mouse spleen tissue slide using KHC2989 (PIM2 IHC Kit).



Immunohistochemical analysis of paraffin-embedded mouse small intestine tissue slide using KHC2989 (PIM2 IHC Kit).



Immunohistochemical analysis of paraffin-embedded rat small intestine tissue slide using KHC2989 (PIM2 IHC Kit).