

IHCeasy[®] SENP1 Ready-To-Use IHC Kit

Catalog Number: **KHC2985**

General Information

Sample type:
FFPE tissue
Cited sample type:
Reactivity:
Human, Mouse, Rat
Cited Reactivity:

Assay type:
Immunohistochemistry
Primary antibody type:
Rabbit Recombinant
Secondary antibody type:
Polymer-HRP-Goat anti-Rabbit

Kit Component

Component	Size	Concentration
Antigen Retrieval Buffer	100 mL	50×
Washing Buffer	100 mL ×2	20×
Blocking Buffer	5 mL	RTU
Primary Antibody	5 mL	RTU
Secondary Antibody	5 mL	RTU
Chromogen Component A	0.2 mL	RTU
Chromogen Component B	4 mL	RTU
Signal Enhancer	5 mL	RTU
Counter Staining Reagent	5 mL	RTU
Mounting Media	5 mL	RTU
Control Slide	1 slide (Optional)	FFPE
Datasheet	1 Copy	
Manual	1 Copy	

Storage Instructions

All the reagents are stored at 2-8°C. The kit is stable for 6 months from the date of receipt.

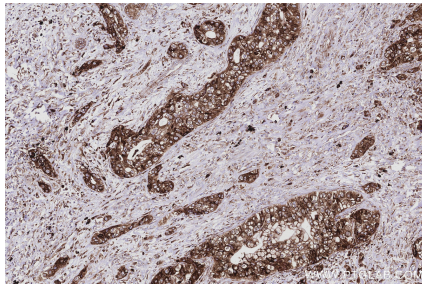
Background

SENP1, Sentrin-specific protease 1, is a cysteine protease that specifically targets members of the small ubiquitin-like modifier (SUMO) protein family. SENP1 catalyzes two functions in the SUMO pathway. The first is the hydrolysis of an alpha-linked peptide bond at the C-terminal end of the small ubiquitin-like modifier (SUMO) propeptides. The second is the deconjugation of SUMO1, SUMO2 and SUMO3 from targeted proteins. SENP1 is located in the nucleus and cytosol.

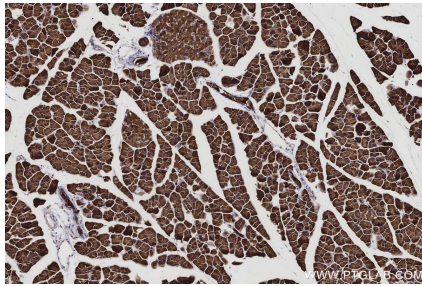
Synonyms

SENP 1, Sentrin specific protease 1, SuPr 2, SuPr2

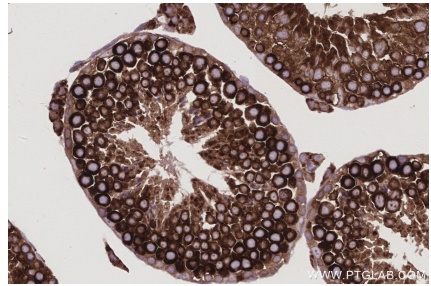
Selected Validation Data



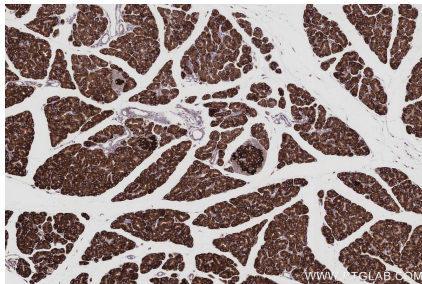
Immunohistochemical analysis of paraffin-embedded human pancreas cancer tissue slide using KHC2985 (SENP1 IHC Kit).



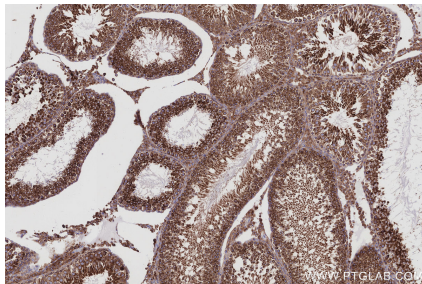
Immunohistochemical analysis of paraffin-embedded mouse pancreas tissue slide using KHC2985 (SENP1 IHC Kit).



Immunohistochemical analysis of paraffin-embedded mouse testis tissue slide using KHC2985 (SENP1 IHC Kit).



Immunohistochemical analysis of paraffin-embedded rat pancreas tissue slide using KHC2985 (SENP1 IHC Kit).



Immunohistochemical analysis of paraffin-embedded rat testis tissue slide using KHC2985 (SENP1 IHC Kit).