

IHCeasy[®] DTL Ready-To-Use IHC Kit

Catalog Number: **KHC2979**

General Information

Sample type:
FFPE tissue
Cited sample type:
Reactivity:
Human, Mouse
Cited Reactivity:

Assay type:
Immunohistochemistry
Primary antibody type:
Rabbit Polyclonal
Secondary antibody type:
Polymer-HRP-Goat anti-Rabbit

Kit Component

Component	Size	Concentration
Antigen Retrieval Buffer	100 mL	50×
Washing Buffer	100 mL ×2	20×
Blocking Buffer	5 mL	RTU
Primary Antibody	5 mL	RTU
Secondary Antibody	5 mL	RTU
Chromogen Component A	0.2 mL	RTU
Chromogen Component B	4 mL	RTU
Signal Enhancer	5 mL	RTU
Counter Staining Reagent	5 mL	RTU
Mounting Media	5 mL	RTU
Control Slide	1 slide (Optional)	FFPE
Datasheet	1 Copy	
Manual	1 Copy	

Storage Instructions

All the reagents are stored at 2-8°C. The kit is stable for 6 months from the date of receipt.

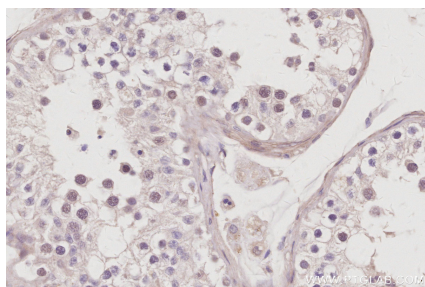
Background

DTL, also named as L2DTL or RAMP, is one of the substrate receptors of the Cullin Ring Ubiquitin Ligase 4 that targets for ubiquitin mediated degradation a number of substrates, such as CDT1, p21 and CHK1, involved in the regulation of cell cycle and survival. DTL overexpression was reported in breast, gastric and ovarian carcinomas and rhabdomyosarcomas and associated with the aggressiveness of hepatocellular carcinomas.

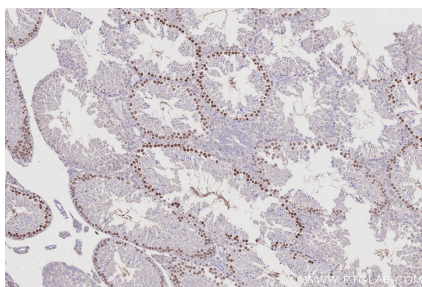
Synonyms

CDT2, CDW1, DCAF2, DDB1- and CUL4-associated factor 2, Denticless protein homolog

Selected Validation Data



Immunohistochemical analysis of paraffin-embedded human testis tissue slide using KHC2979 (DTL IHC Kit).



Immunohistochemical analysis of paraffin-embedded mouse testis tissue slide using KHC2979 (DTL IHC Kit).