

# IHCeasy<sup>®</sup> BRE Ready-To-Use IHC Kit

Catalog Number: **KHC2970**

## General Information

Sample type:  
FFPE tissue  
Cited sample type:  
Reactivity:  
Human, Mouse, Rat  
Cited Reactivity:

Assay type:  
Immunohistochemistry  
Primary antibody type:  
Mouse Monoclonal  
Secondary antibody type:  
Polymer-HRP-Goat anti-Mouse

## Kit Component

Component	Size	Concentration
Antigen Retrieval Buffer	100 mL	50×
Washing Buffer	100 mL ×2	20×
Blocking Buffer	5 mL	RTU
Primary Antibody	5 mL	RTU
Secondary Antibody	5 mL	RTU
Chromogen Component A	0.2 mL	RTU
Chromogen Component B	4 mL	RTU
Signal Enhancer	5 mL	RTU
Counter Staining Reagent	5 mL	RTU
Mounting Media	5 mL	RTU
Control Slide	1 slide (Optional)	FFPE
Datasheet	1 Copy	
Manual	1 Copy	

## Storage Instructions

All the reagents are stored at 2-8°C. The kit is stable for 6 months from the date of receipt.

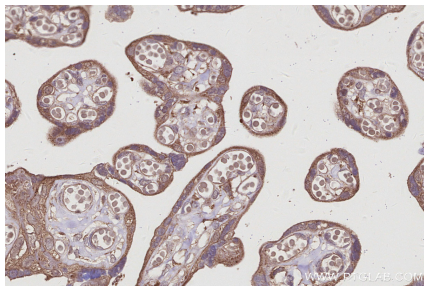
## Background

BRE, also named as BRCC45, is a death receptor-associated antiapoptotic protein, which is also involved in DNA-damage repair, and K63-specific deubiquitination. BRE and its XIAP-sustaining mechanism could represent novel targets for anti-cancer therapy. BRE may regulate TNF- $\alpha$  signaling through its interactions with TNFRSF1A. It plays a role in homeostasis or cellular differentiation in cells of neural, epithelial and germline origins.

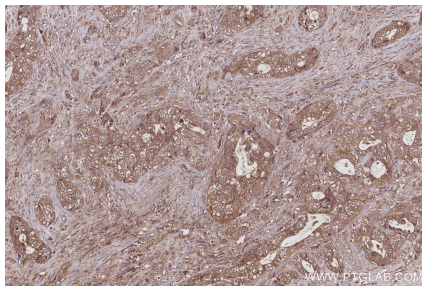
## Synonyms

BABAM2, Brain and reproductive organ-expressed protein, BRCA1 A complex subunit BRE, BRCA1/BRCA2-containing complex subunit 45, BRCA1-A complex subunit BRE

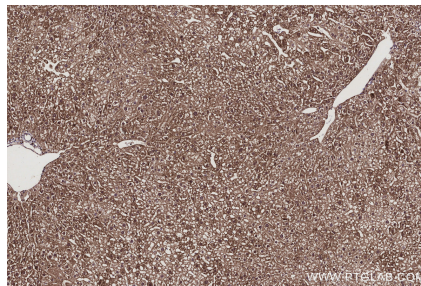
## Selected Validation Data



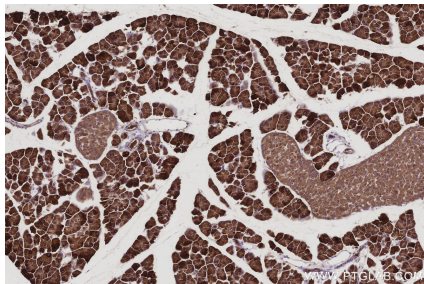
Immunohistochemical analysis of paraffin-embedded human placenta tissue slide using KHC2970 (BRE IHC Kit).



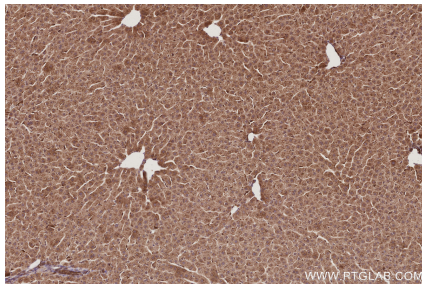
Immunohistochemical analysis of paraffin-embedded human pancreas cancer tissue slide using KHC2970 (BRE IHC Kit).



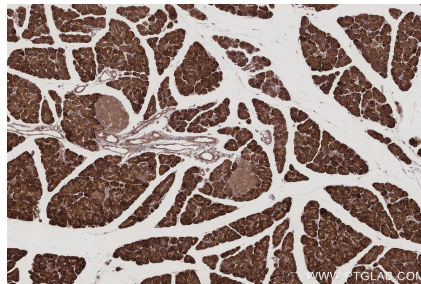
Immunohistochemical analysis of paraffin-embedded mouse liver tissue slide using KHC2970 (BRE IHC Kit).



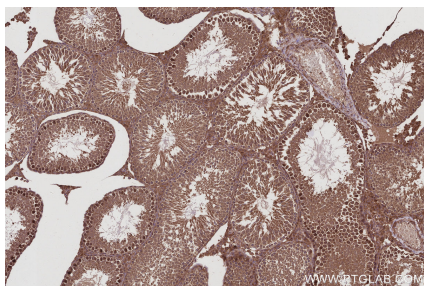
Immunohistochemical analysis of paraffin-embedded mouse pancreas tissue slide using KHC2970 (BRE IHC Kit).



Immunohistochemical analysis of paraffin-embedded rat liver tissue slide using KHC2970 (BRE IHC Kit).



Immunohistochemical analysis of paraffin-embedded rat pancreas tissue slide using KHC2970 (BRE IHC Kit).



Immunohistochemical analysis of paraffin-embedded rat testis tissue slide using KHC2970 (BRE IHC Kit).