

IHCeasy[®] ECT2 Ready-To-Use IHC Kit

Catalog Number: **KHC2964**

General Information

Sample type:
FFPE tissue
Cited sample type:
Reactivity:
Human, Mouse
Cited Reactivity:

Assay type:
Immunohistochemistry
Primary antibody type:
Rabbit Polyclonal
Secondary antibody type:
Polymer-HRP-Goat anti-Rabbit

Kit Component

Component	Size	Concentration
Antigen Retrieval Buffer	100 mL	50×
Washing Buffer	100 mL ×2	20×
Blocking Buffer	5 mL	RTU
Primary Antibody	5 mL	RTU
Secondary Antibody	5 mL	RTU
Chromogen Component A	0.2 mL	RTU
Chromogen Component B	4 mL	RTU
Signal Enhancer	5 mL	RTU
Counter Staining Reagent	5 mL	RTU
Mounting Media	5 mL	RTU
Control Slide	1 slide (Optional)	FFPE
Datasheet	1 Copy	
Manual	1 Copy	

Storage Instructions

All the reagents are stored at 2-8°C. The kit is stable for 6 months from the date of receipt.

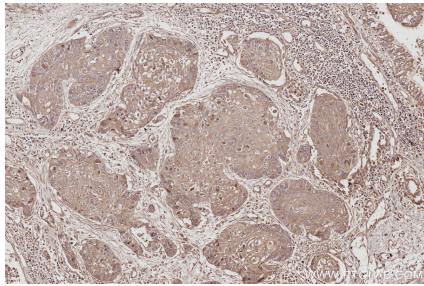
Background

Epithelial cell transforming sequence 2 (Ect2) is a guanine nucleotide exchange factor (GEF) for the Rho family GTPases, Rac1, RhoA and Cdc42. Ect2 catalyzes the exchange of GDP for GTP, thereby activating the Rho GTPases toward their downstream effectors. The cellular localization of Ect2 is cell cycle dependent. Ect2 is localized predominantly in the nucleus during interphase due to two functional NLS sequences found within its central hinge region.¹ At the onset of mitosis, Ect2 is dispersed throughout the cytoplasm where it associates with the mitotic spindle at metaphase, the cleavage furrow during telophase, and the mid-body during cytokinesis. Besides normal cellular activity, ECT2 also participates in malignant transformation, tumor initiation, and metastasis.

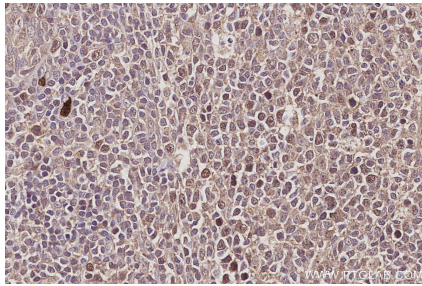
Synonyms

Epithelial cell-transforming sequence 2 oncogene, Protein ECT2

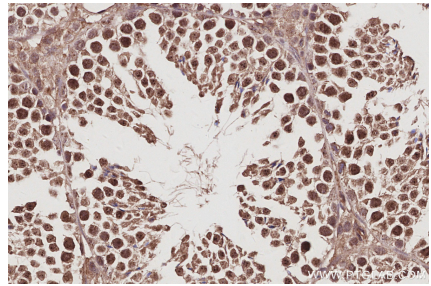
Selected Validation Data



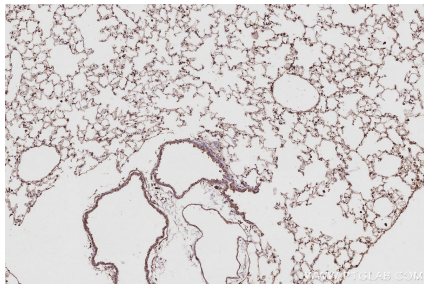
Immunohistochemical analysis of paraffin-embedded human lung cancer tissue slide using KHC2964 (ECT2 IHC Kit).



Immunohistochemical analysis of paraffin-embedded human tonsillitis tissue slide using KHC2964 (ECT2 IHC Kit).



Immunohistochemical analysis of paraffin-embedded mouse testis tissue slide using KHC2964 (ECT2 IHC Kit).



Immunohistochemical analysis of paraffin-embedded mouse lung tissue slide using KHC2964 (ECT2 IHC Kit).