

IHC*easy* ARL8B Ready-To-Use IHC Kit

Catalog Number: **KHC2959**

General Information

Sample type:
FFPE tissue
Cited sample type:
Reactivity:
Human, Mouse, Rat
Cited Reactivity:

Assay type:
Immunohistochemistry
Primary antibody type:
Rabbit Polyclonal
Secondary antibody type:
Polymer-HRP-Goat anti-Rabbit

Kit Component

Component	Size	Concentration
Antigen Retrieval Buffer	100 mL	50×
Washing Buffer	100 mL ×2	20×
Blocking Buffer	5 mL	RTU
Primary Antibody	5 mL	RTU
Secondary Antibody	5 mL	RTU
Chromogen Component A	0.2 mL	RTU
Chromogen Component B	4 mL	RTU
Signal Enhancer	5 mL	RTU
Counter Staining Reagent	5 mL	RTU
Mounting Media	5 mL	RTU
Control Slide	1 slide (Optional)	FFPE
Datasheet	1 Copy	
Manual	1 Copy	

Storage Instructions

All the reagents are stored at 2-8°C. The kit is stable for 6 months from the date of receipt.

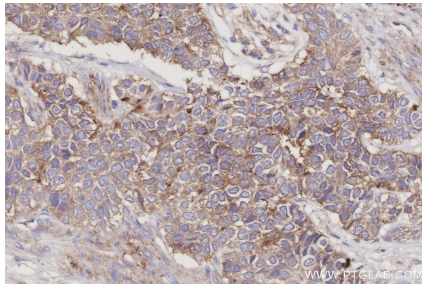
Background

ARL8B (ADP-ribosylation factor-like 8B), also known as ARL10C or GIE1, is a small GTPase of the Arl-family, that is associated with the lysosome. ARL8A interacts with Tubulin, and plays a role in lysosome motility, as well as in chromosomal segregation. ARL8B plays a role in the spatial distribution and positioning of lysosomes. ARL8B is regarded as a regulator of endosome to lysosome trafficking pathways of special significance for host defense.

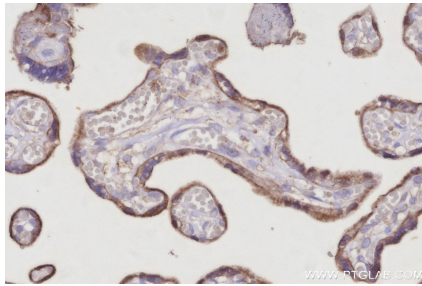
Synonyms

ADP-ribosylation factor-like protein 10C, ADP-ribosylation factor-like protein 8B, ARL10C, EC:3.6.5.2, GIE1

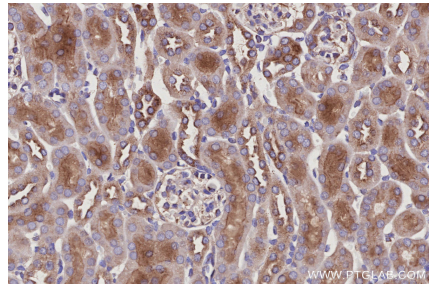
Selected Validation Data



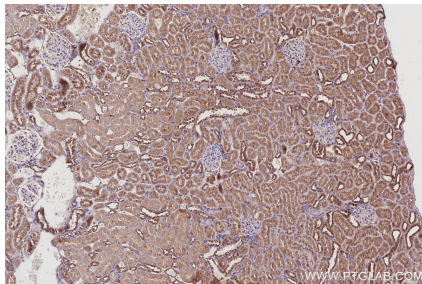
Immunohistochemical analysis of paraffin-embedded human stomach cancer tissue slide using KHC2959 (ARL8B IHC Kit).



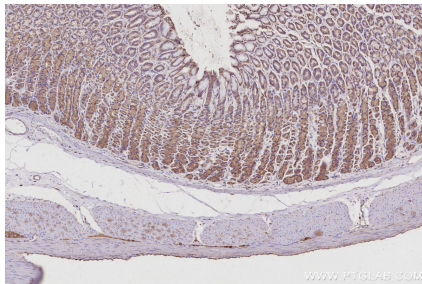
Immunohistochemical analysis of paraffin-embedded human placenta tissue slide using KHC2959 (ARL8B IHC Kit).



Immunohistochemical analysis of paraffin-embedded mouse kidney tissue slide using KHC2959 (ARL8B IHC Kit).



Immunohistochemical analysis of paraffin-embedded rat kidney tissue slide using KHC2959 (ARL8B IHC Kit).



Immunohistochemical analysis of paraffin-embedded rat stomach tissue slide using KHC2959 (ARL8B IHC Kit).