

# IHCeasy<sup>®</sup> DIAPH3 Ready-To-Use IHC Kit

Catalog Number: **KHC2954**

## General Information

Sample type:  
FFPE tissue  
Cited sample type:  
Reactivity:  
Human, Mouse, Rat  
Cited Reactivity:

Assay type:  
Immunohistochemistry  
Primary antibody type:  
Rabbit Polyclonal  
Secondary antibody type:  
Polymer-HRP-Goat anti-Rabbit

## Kit Component

Component	Size	Concentration
Antigen Retrieval Buffer	100 mL	50×
Washing Buffer	100 mL ×2	20×
Blocking Buffer	5 mL	RTU
Primary Antibody	5 mL	RTU
Secondary Antibody	5 mL	RTU
Chromogen Component A	0.2 mL	RTU
Chromogen Component B	4 mL	RTU
Signal Enhancer	5 mL	RTU
Counter Staining Reagent	5 mL	RTU
Mounting Media	5 mL	RTU
Control Slide	1 slide (Optional)	FFPE
Datasheet	1 Copy	
Manual	1 Copy	

## Storage Instructions

All the reagents are stored at 2-8°C. The kit is stable for 6 months from the date of receipt.

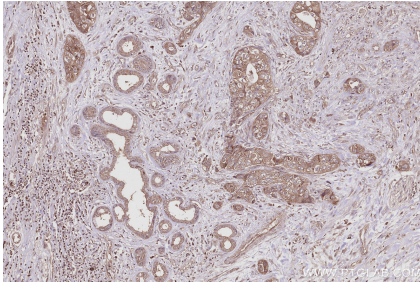
## Background

DIAPH3 is also referred as diaphanous-related formin-3 which binds to GTP-bound form of Rho and to profilin, acts in a Rho-dependent manner to recruit profilin to the membrane. It is required for cytokinesis, stress fiber formation, and transcriptional activation of the serum response factor. Seven isoforms of DIAPH3 exist due to the alternative splicing. Recently it has been reported that dimerization and actin assembly activity of DIAPH3 isoforms 1 and 7 are essential for induction of specific cell protrusions. It may propose that isoform-selective actin assembly by DIAPH3 exerts specific and differentially regulated functions during cell adhesion and motility.

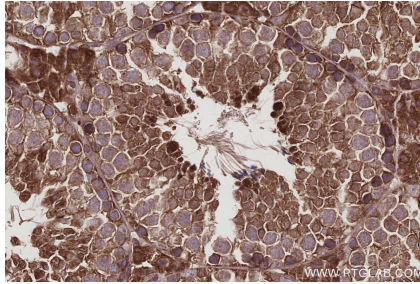
## Synonyms

DIAP3, Diaphanous-related formin-3, DRF3, MDia2

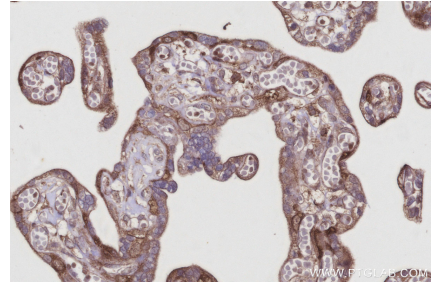
## Selected Validation Data



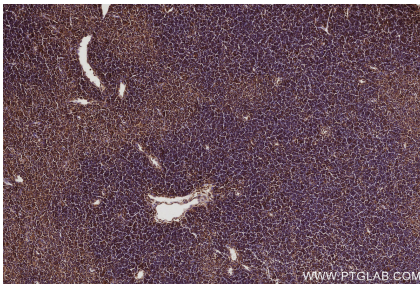
Immunohistochemical analysis of paraffin-embedded human pancreas cancer tissue slide using KHC2954 (DIAPH3 IHC Kit).



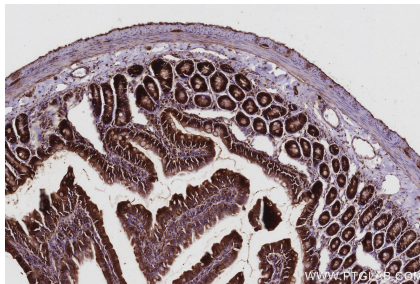
Immunohistochemical analysis of paraffin-embedded mouse testis tissue slide using KHC2954 (DIAPH3 IHC Kit).



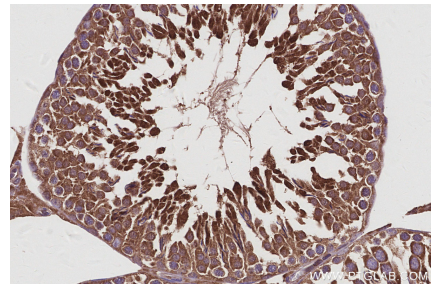
Immunohistochemical analysis of paraffin-embedded human placenta tissue slide using KHC2954 (DIAPH3 IHC Kit).



Immunohistochemical analysis of paraffin-embedded mouse thymus tissue slide using KHC2954 (DIAPH3 IHC Kit).



Immunohistochemical analysis of paraffin-embedded rat small intestine tissue slide using KHC2954 (DIAPH3 IHC Kit).



Immunohistochemical analysis of paraffin-embedded rat testis tissue slide using KHC2954 (DIAPH3 IHC Kit).