

# IHC*easy* RAB9B Ready-To-Use IHC Kit

Catalog Number: **KHC2936**

## General Information

Sample type:  
FFPE tissue  
Cited sample type:  
Reactivity:  
Human, Mouse, Rat  
Cited Reactivity:

Assay type:  
Immunohistochemistry  
Primary antibody type:  
Mouse Monoclonal  
Secondary antibody type:  
Polymer-HRP-Goat anti-Mouse

## Kit Component

Component	Size	Concentration
Antigen Retrieval Buffer	100 mL	50×
Washing Buffer	100 mL ×2	20×
Blocking Buffer	5 mL	RTU
Primary Antibody	5 mL	RTU
Secondary Antibody	5 mL	RTU
Chromogen Component A	0.2 mL	RTU
Chromogen Component B	4 mL	RTU
Signal Enhancer	5 mL	RTU
Counter Staining Reagent	5 mL	RTU
Mounting Media	5 mL	RTU
Control Slide	1 slide (Optional)	FFPE
Datasheet	1 Copy	
Manual	1 Copy	

## Storage Instructions

All the reagents are stored at 2-8°C. The kit is stable for 6 months from the date of receipt.

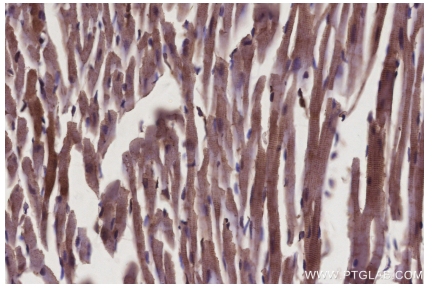
## Background

RAB9B, also named as RAB9L, is involved in the transport of proteins between the endosomes and the trans Golgi network. RAB9B belongs to the Ras-related superfamily of guanine nucleotide binding proteins, which includes the Ral/Rec, Rap, R-Ras, and Rho/Rab subfamilies.

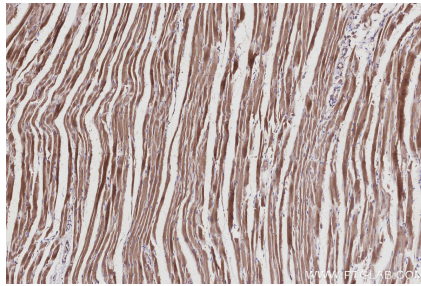
## Synonyms

Rab 9 like protein, Rab 9L, RAB9L, Rab-9L, Rab-9-like protein

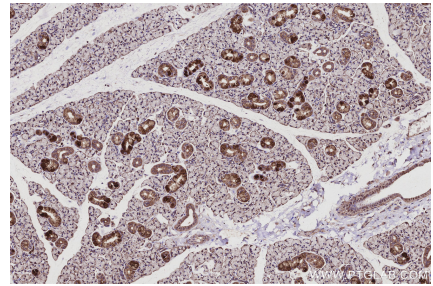
## Selected Validation Data



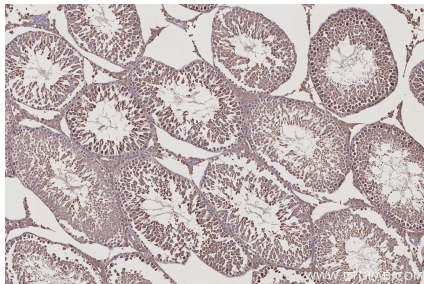
Immunohistochemical analysis of paraffin-embedded mouse heart tissue slide using KHC2936 (RAB9B IHC Kit).



Immunohistochemical analysis of paraffin-embedded rat heart tissue slide using KHC2936 (RAB9B IHC Kit).



Immunohistochemical analysis of paraffin-embedded rat salivary gland tissue slide using KHC2936 (RAB9B IHC Kit).



Immunohistochemical analysis of paraffin-embedded rat testis tissue slide using KHC2936 (RAB9B IHC Kit).