

# IHC*easy* RAB18 Ready-To-Use IHC Kit

Catalog Number: **KHC2935**

## General Information

Sample type:  
FFPE tissue  
Cited sample type:  
Reactivity:  
Human, Mouse, Rat  
Cited Reactivity:

Assay type:  
Immunohistochemistry  
Primary antibody type:  
Mouse Monoclonal  
Secondary antibody type:  
Polymer-HRP-Goat anti-Mouse

## Kit Component

Component	Size	Concentration
Antigen Retrieval Buffer	100 mL	50×
Washing Buffer	100 mL ×2	20×
Blocking Buffer	5 mL	RTU
Primary Antibody	5 mL	RTU
Secondary Antibody	5 mL	RTU
Chromogen Component A	0.2 mL	RTU
Chromogen Component B	4 mL	RTU
Signal Enhancer	5 mL	RTU
Counter Staining Reagent	5 mL	RTU
Mounting Media	5 mL	RTU
Control Slide	1 slide (Optional)	FFPE
Datasheet	1 Copy	
Manual	1 Copy	

## Storage Instructions

All the reagents are stored at 2-8°C. The kit is stable for 6 months from the date of receipt.

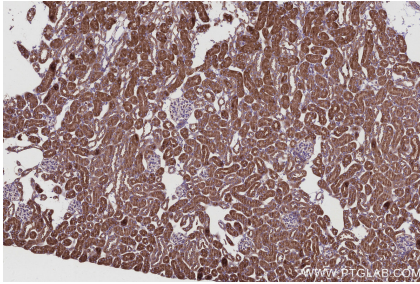
## Background

RAB18 is a member of a family of Ras-related small GTPases. RAB18 plays a role in apical endocytosis/recycling, and may be implicated in transport between the plasma membrane and early endosomes. It also plays a key role in eye and brain development and neurodegeneration. Defects in RAB18 are associated with Warburg micro syndrome type 3.

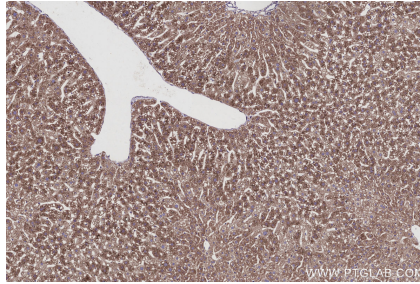
## Synonyms

RAB18LI1, Ras related protein Rab 18, Ras-related protein Rab-18

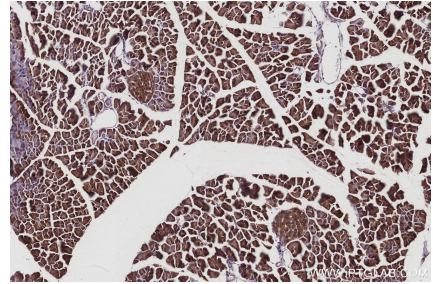
## Selected Validation Data



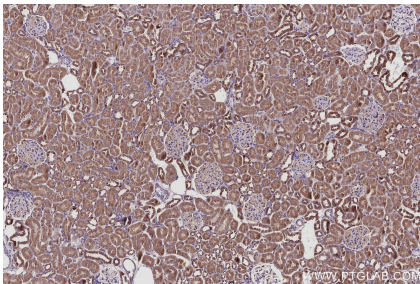
Immunohistochemical analysis of paraffin-embedded mouse kidney tissue slide using KHC2935 (RAB18 IHC Kit).



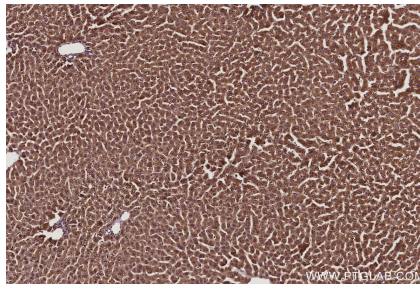
Immunohistochemical analysis of paraffin-embedded mouse liver tissue slide using KHC2935 (RAB18 IHC Kit).



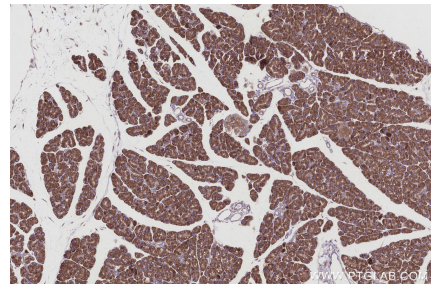
Immunohistochemical analysis of paraffin-embedded mouse pancreas tissue slide using KHC2935 (RAB18 IHC Kit).



Immunohistochemical analysis of paraffin-embedded rat kidney tissue slide using KHC2935 (RAB18 IHC Kit).



Immunohistochemical analysis of paraffin-embedded rat liver tissue slide using KHC2935 (RAB18 IHC Kit).



Immunohistochemical analysis of paraffin-embedded rat pancreas tissue slide using KHC2935 (RAB18 IHC Kit).