

# IHC*easy* SENP3 Ready-To-Use IHC Kit

Catalog Number: **KHC2916**

## General Information

Sample type:  
FFPE tissue  
Cited sample type:  
Reactivity:  
Human, Mouse, Rat  
Cited Reactivity:

Assay type:  
Immunohistochemistry  
Primary antibody type:  
Rabbit Recombinant  
Secondary antibody type:  
Polymer-HRP-Goat anti-Rabbit

## Kit Component

Component	Size	Concentration
Antigen Retrieval Buffer	100 mL	50×
Washing Buffer	100 mL ×2	20×
Blocking Buffer	5 mL	RTU
Primary Antibody	5 mL	RTU
Secondary Antibody	5 mL	RTU
Chromogen Component A	0.2 mL	RTU
Chromogen Component B	4 mL	RTU
Signal Enhancer	5 mL	RTU
Counter Staining Reagent	5 mL	RTU
Mounting Media	5 mL	RTU
Control Slide	1 slide (Optional)	FFPE
Datasheet	1 Copy	
Manual	1 Copy	

## Storage Instructions

All the reagents are stored at 2-8°C. The kit is stable for 6 months from the date of receipt.

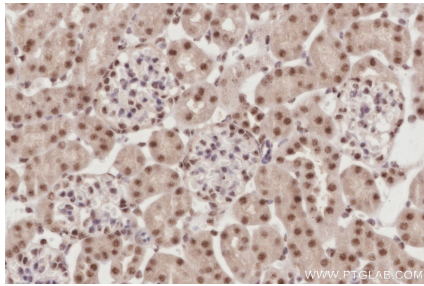
## Background

SENP3(Sentrin-specific protease 3) is also named as SSP3, SUSP3 and belongs to the peptidase C48 family. It acts as an essential factor for ribosome biogenesis. SENP3 might regulate the sumoylation of other substrates through directly binding or mediating association with NPM1 at the nucleolus and other subcellular compartments.

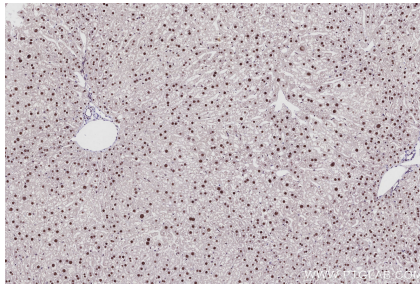
## Synonyms

EC:3.4.22.-, Sentrin/SUMO-specific protease SENP3, Sentrin-specific protease 3, SMT3IP1, SSP3

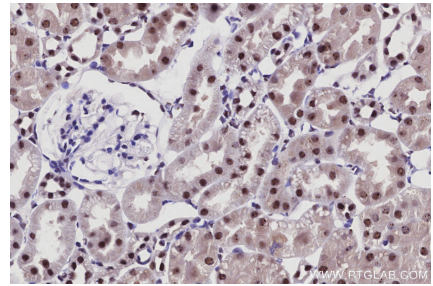
## Selected Validation Data



Immunohistochemical analysis of paraffin-embedded mouse kidney tissue slide using KHC2916 (SENP3 IHC Kit).



Immunohistochemical analysis of paraffin-embedded mouse liver tissue slide using KHC2916 (SENP3 IHC Kit).



Immunohistochemical analysis of paraffin-embedded rat kidney tissue slide using KHC2916 (SENP3 IHC Kit).