

IHC*easy* SLK Ready-To-Use IHC Kit

Catalog Number: **KHC2905**

General Information

Sample type:
FFPE tissue
Cited sample type:
Reactivity:
Human, Mouse, Rat
Cited Reactivity:

Assay type:
Immunohistochemistry
Primary antibody type:
Rabbit Polyclonal
Secondary antibody type:
Polymer-HRP-Goat anti-Rabbit

Kit Component

Component	Size	Concentration
Antigen Retrieval Buffer	100 mL	50×
Washing Buffer	100 mL ×2	20×
Blocking Buffer	5 mL	RTU
Primary Antibody	5 mL	RTU
Secondary Antibody	5 mL	RTU
Chromogen Component A	0.2 mL	RTU
Chromogen Component B	4 mL	RTU
Signal Enhancer	5 mL	RTU
Counter Staining Reagent	5 mL	RTU
Mounting Media	5 mL	RTU
Control Slide	1 slide (Optional)	FFPE
Datasheet	1 Copy	
Manual	1 Copy	

Storage Instructions

All the reagents are stored at 2-8°C. The kit is stable for 6 months from the date of receipt.

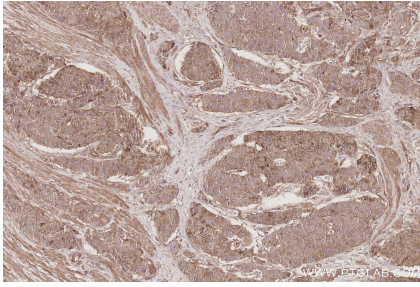
Background

SLK, also named as KIAA0204 and STK2, belongs to the protein kinase superfamily, STE Ser/Thr protein kinase family and STE20 subfamily. SLK plays an important role in cell proliferation and cytoskeletal remodeling. In fibroblasts, SLK has been shown to respond to FAK/Src signaling and regulate focal adhesion turnover through Paxillin phosphorylation. Full-length SLK has also been shown to be essential for embryonic development. In myoblasts, the overexpression of a dominant negative SLK is sufficient to block myoblast fusion.

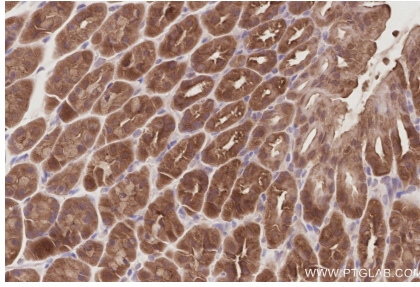
Synonyms

CTCL tumor antigen se20 9, CTCL tumor antigen se20-9, EC:2.7.11.1, hSLK, KIAA0204

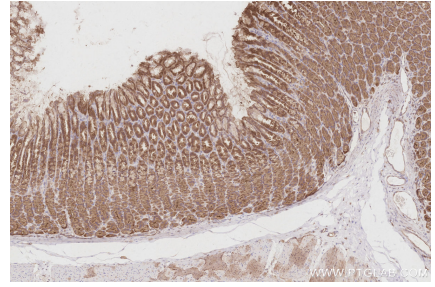
Selected Validation Data



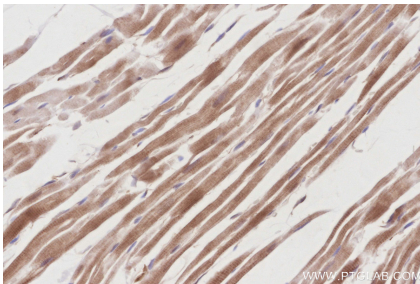
Immunohistochemical analysis of paraffin-embedded human stomach cancer tissue slide using KHC2905 (SLK IHC Kit).



Immunohistochemical analysis of paraffin-embedded mouse stomach tissue slide using KHC2905 (SLK IHC Kit).



Immunohistochemical analysis of paraffin-embedded rat stomach tissue slide using KHC2905 (SLK IHC Kit).



Immunohistochemical analysis of paraffin-embedded rat heart tissue slide using KHC2905 (SLK IHC Kit).