

# IHC*easy* OSBPL5 Ready-To-Use IHC Kit

Catalog Number: **KHC2900**

## General Information

Sample type:  
FFPE tissue  
Cited sample type:  
Reactivity:  
Human, Mouse, Rat  
Cited Reactivity:

Assay type:  
Immunohistochemistry  
Primary antibody type:  
Rabbit Polyclonal  
Secondary antibody type:  
Polymer-HRP-Goat anti-Rabbit

## Kit Component

Component	Size	Concentration
Antigen Retrieval Buffer	100 mL	50×
Washing Buffer	100 mL ×2	20×
Blocking Buffer	5 mL	RTU
Primary Antibody	5 mL	RTU
Secondary Antibody	5 mL	RTU
Chromogen Component A	0.2 mL	RTU
Chromogen Component B	4 mL	RTU
Signal Enhancer	5 mL	RTU
Counter Staining Reagent	5 mL	RTU
Mounting Media	5 mL	RTU
Control Slide	1 slide (Optional)	FFPE
Datasheet	1 Copy	
Manual	1 Copy	

## Storage Instructions

All the reagents are stored at 2-8°C. The kit is stable for 6 months from the date of receipt.

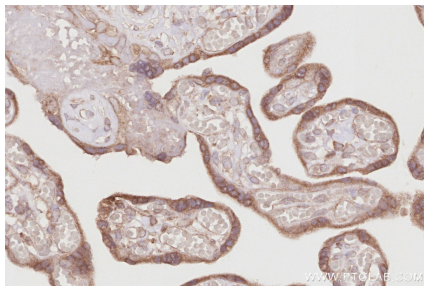
## Background

OSBPL5, also known as oxysterol binding protein like 5, is a protein-coding gene in humans. It is a member of the oxysterol-binding protein (OSBP) family, which consists of intracellular lipid receptors that play a crucial role in maintaining cholesterol balance in the body. It is expressed ubiquitously in various tissues, including the spleen and endometrium. OSBPL5 is classified as a plasma protein and transporter, with a predicted subcellular location in the membrane and intracellular compartments. The protein has been implicated in several biological processes and is involved in the transport of lipids and other molecules between organelles. In terms of disease association, OSBPL5 has been linked to conditions such as Lenz-Majewski hyperostotic dwarfism. Additionally, the OSBPL family of proteins, including OSBPL5, has been suggested to play a role in cancer development, although specific roles in different types of cancer are still being investigated.

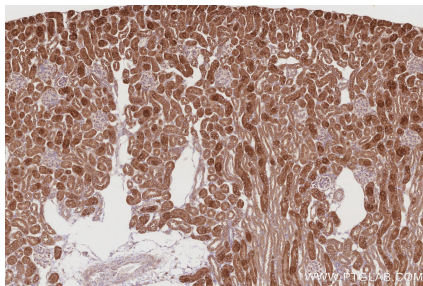
## Synonyms

KIAA1534, OBPH1, ORP 5, ORP5, ORP-5

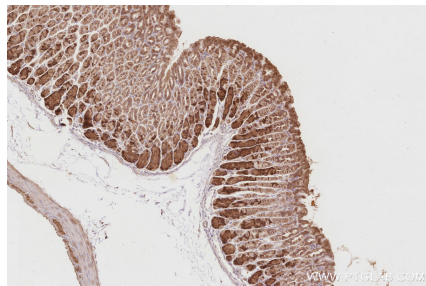
## Selected Validation Data



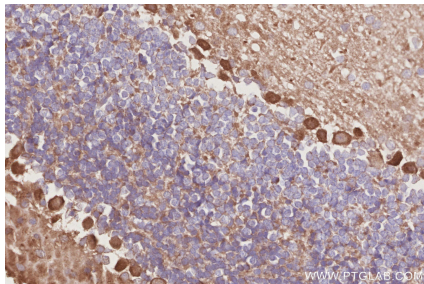
Immunohistochemical analysis of paraffin-embedded human placenta tissue slide using KHC2900 (OSBPL5 IHC Kit).



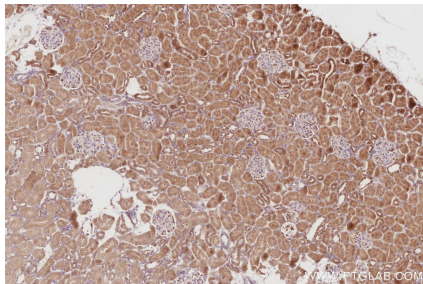
Immunohistochemical analysis of paraffin-embedded mouse kidney tissue slide using KHC2900 (OSBPL5 IHC Kit).



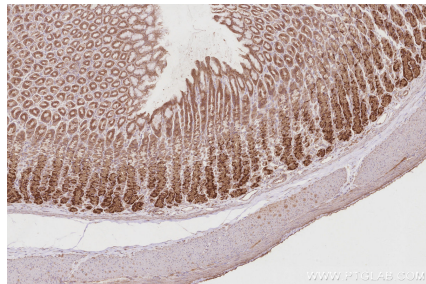
Immunohistochemical analysis of paraffin-embedded mouse stomach tissue slide using KHC2900 (OSBPL5 IHC Kit).



Immunohistochemical analysis of paraffin-embedded mouse cerebellum tissue slide using KHC2900 (OSBPL5 IHC Kit).



Immunohistochemical analysis of paraffin-embedded rat kidney tissue slide using KHC2900 (OSBPL5 IHC Kit).



Immunohistochemical analysis of paraffin-embedded rat stomach tissue slide using KHC2900 (OSBPL5 IHC Kit).