

IHC*easy* MIS12 Ready-To-Use IHC Kit

Catalog Number: **KHC2898**

General Information

Sample type:
FFPE tissue
Cited sample type:
Reactivity:
Human, Mouse, Rat
Cited Reactivity:

Assay type:
Immunohistochemistry
Primary antibody type:
Rabbit Polyclonal
Secondary antibody type:
Polymer-HRP-Goat anti-Rabbit

Kit Component

Component	Size	Concentration
Antigen Retrieval Buffer	100 mL	50×
Washing Buffer	100 mL ×2	20×
Blocking Buffer	5 mL	RTU
Primary Antibody	5 mL	RTU
Secondary Antibody	5 mL	RTU
Chromogen Component A	0.2 mL	RTU
Chromogen Component B	4 mL	RTU
Signal Enhancer	5 mL	RTU
Counter Staining Reagent	5 mL	RTU
Mounting Media	5 mL	RTU
Control Slide	1 slide (Optional)	FFPE
Datasheet	1 Copy	
Manual	1 Copy	

Storage Instructions

All the reagents are stored at 2-8°C. The kit is stable for 6 months from the date of receipt.

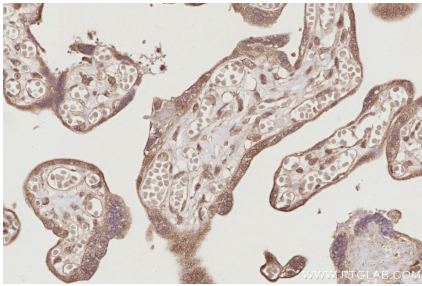
Background

The MIS12 complex, composed of the Mis12, Pmf1, Nsl1 and Dsn1 subunits, is a highly conserved kinetochore protein that interacts with the Ndc80 and Knl1 complexes, forming the KMN network. MIS12 is a part of the MIS12 complex which is required for normal chromosome alignment and segregation and for kinetochore formation during mitosis. MIS12 is essential for proper kinetochore microtubule attachments.

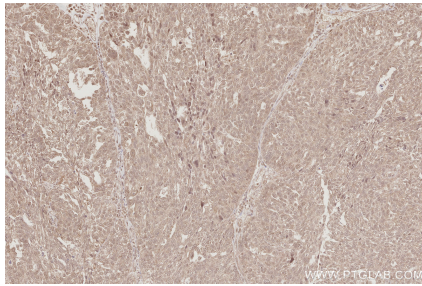
Synonyms

hMis12, KNTC2AP, MTW1, Protein MIS12 homolog

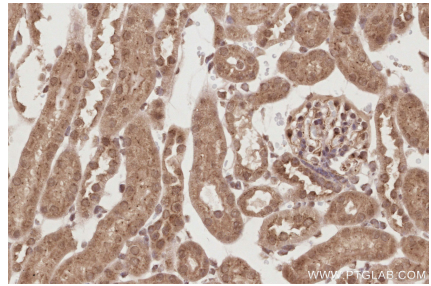
Selected Validation Data



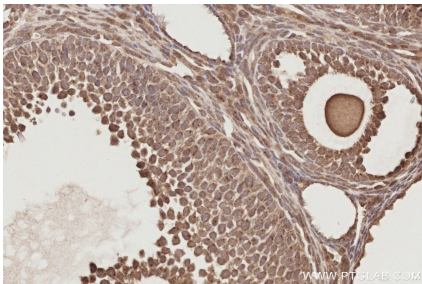
Immunohistochemical analysis of paraffin-embedded human placenta tissue slide using KHC2898 (MIS12 IHC Kit).



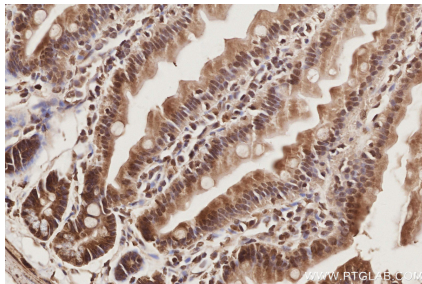
Immunohistochemical analysis of paraffin-embedded human ovary cancer tissue slide using KHC2898 (MIS12 IHC Kit).



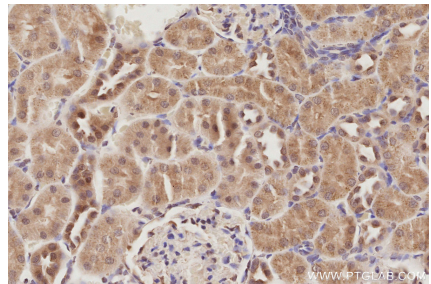
Immunohistochemical analysis of paraffin-embedded mouse kidney tissue slide using KHC2898 (MIS12 IHC Kit).



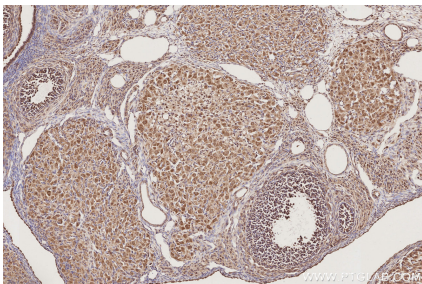
Immunohistochemical analysis of paraffin-embedded mouse ovary tissue slide using KHC2898 (MIS12 IHC Kit).



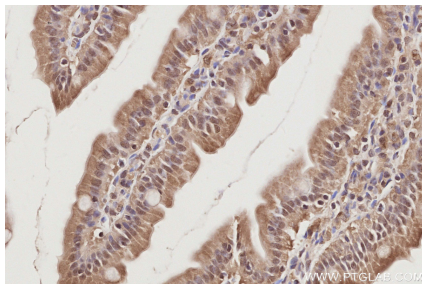
Immunohistochemical analysis of paraffin-embedded mouse small intestine tissue slide using KHC2898 (MIS12 IHC Kit).



Immunohistochemical analysis of paraffin-embedded rat kidney tissue slide using KHC2898 (MIS12 IHC Kit).



Immunohistochemical analysis of paraffin-embedded rat ovary tissue slide using KHC2898 (MIS12 IHC Kit).



Immunohistochemical analysis of paraffin-embedded rat small intestine tissue slide using KHC2898 (MIS12 IHC Kit).