

IHC*easy* STRADB Ready-To-Use IHC Kit

Catalog Number: **KHC2895**

General Information

Sample type:
FFPE tissue
Cited sample type:
Reactivity:
Human, Mouse, Rat
Cited Reactivity:

Assay type:
Immunohistochemistry
Primary antibody type:
Rabbit Polyclonal
Secondary antibody type:
Polymer-HRP-Goat anti-Rabbit

Kit Component

Component	Size	Concentration
Antigen Retrieval Buffer	100 mL	50×
Washing Buffer	100 mL ×2	20×
Blocking Buffer	5 mL	RTU
Primary Antibody	5 mL	RTU
Secondary Antibody	5 mL	RTU
Chromogen Component A	0.2 mL	RTU
Chromogen Component B	4 mL	RTU
Signal Enhancer	5 mL	RTU
Counter Staining Reagent	5 mL	RTU
Mounting Media	5 mL	RTU
Control Slide	1 slide (Optional)	FFPE
Datasheet	1 Copy	
Manual	1 Copy	

Storage Instructions

All the reagents are stored at 2-8°C. The kit is stable for 6 months from the date of receipt.

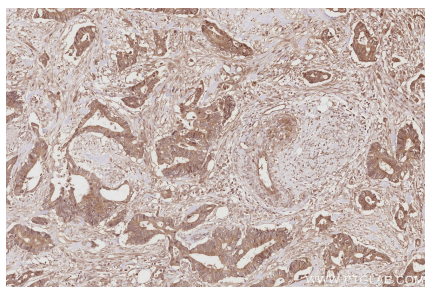
Background

The 418 amino acid STRADB protein, which is also named as ALS2CR2 and ILPIP, contains a putative N-terminal ATP-binding site, a protein kinase domain, and several C-terminal phosphorylation sites. STRADB potentiates the antiapoptotic activity of XIAP by enhancing XIAP-mediated activation of JNK1 and other JNK family members, but not by modulating XIAP-mediated caspase inhibition.

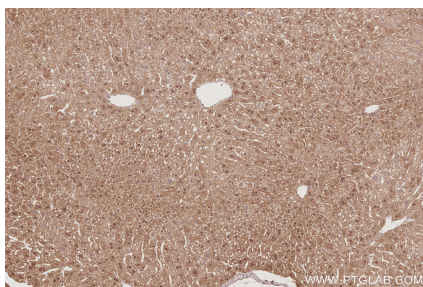
Synonyms

ALS2CR2, Amyotrophic lateral sclerosis 2 chromosomal region candidate gene 2 protein, CALS 21, ILP interacting protein, ILP-interacting protein

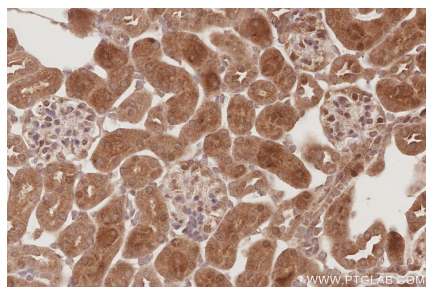
Selected Validation Data



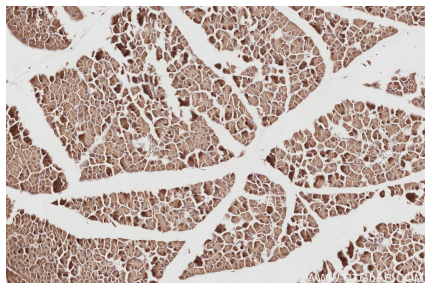
Immunohistochemical analysis of paraffin-embedded human rectal cancer tissue slide using KHC2895 (STRADB IHC Kit).



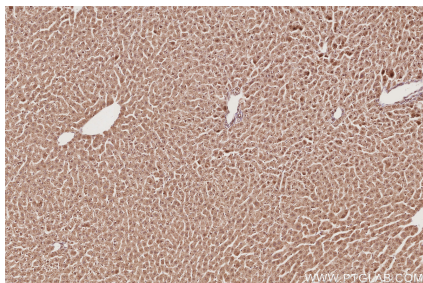
Immunohistochemical analysis of paraffin-embedded mouse liver tissue slide using KHC2895 (STRADB IHC Kit).



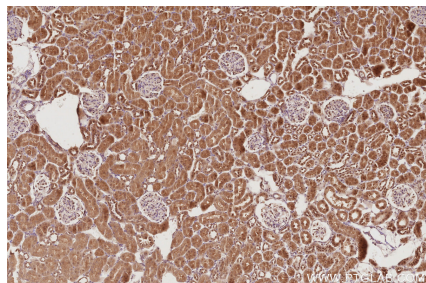
Immunohistochemical analysis of paraffin-embedded mouse kidney tissue slide using KHC2895 (STRADB IHC Kit).



Immunohistochemical analysis of paraffin-embedded mouse pancreas tissue slide using KHC2895 (STRADB IHC Kit).



Immunohistochemical analysis of paraffin-embedded rat liver tissue slide using KHC2895 (STRADB IHC Kit).



Immunohistochemical analysis of paraffin-embedded rat kidney tissue slide using KHC2895 (STRADB IHC Kit).