

# IHC*easy* TRIM5 Ready-To-Use IHC Kit

Catalog Number: **KHC2890**

## General Information

Sample type:  
FFPE tissue  
Cited sample type:  
Reactivity:  
Human  
Cited Reactivity:

Assay type:  
Immunohistochemistry  
Primary antibody type:  
Mouse Monoclonal  
Secondary antibody type:  
Polymer-HRP-Goat anti-Mouse

## Kit Component

Component	Size	Concentration
Antigen Retrieval Buffer	100 mL	50×
Washing Buffer	100 mL ×2	20×
Blocking Buffer	5 mL	RTU
Primary Antibody	5 mL	RTU
Secondary Antibody	5 mL	RTU
Chromogen Component A	0.2 mL	RTU
Chromogen Component B	4 mL	RTU
Signal Enhancer	5 mL	RTU
Counter Staining Reagent	5 mL	RTU
Mounting Media	5 mL	RTU
Control Slide	1 slide (Optional)	FFPE
Datasheet	1 Copy	
Manual	1 Copy	

## Storage Instructions

All the reagents are stored at 2-8°C. The kit is stable for 6 months from the date of receipt.

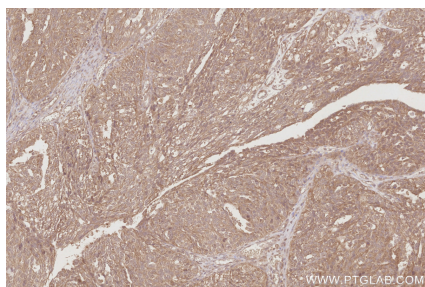
## Background

TRIM5 belongs to the large tripartite motif protein family, members of which typically are composed of 3 zinc-binding domains, a RING, unique B-box type 1 and B-box type 2 domains, followed by a coiled-coil (CC) region. TRIM proteins use homomultimerization to identify specific cell compartments. TRIM5 promotes innate immune signaling and that this activity is amplified by retroviral infection and interaction with the capsid lattice.

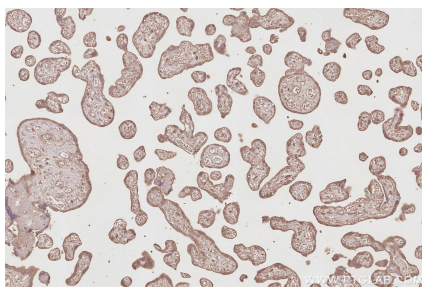
## Synonyms

EC:2.3.2.27, RING-type E3 ubiquitin transferase TRIM5, RNF88, tripartite motif containing 5, Tripartite motif-containing protein 5

## Selected Validation Data



Immunohistochemical analysis of paraffin-embedded human ovary cancer tissue slide using KHC2890 (TRIM5 IHC Kit).



Immunohistochemical analysis of paraffin-embedded human placenta tissue slide using KHC2890 (TRIM5 IHC Kit).