

IHC*easy* TIPIN Ready-To-Use IHC Kit

Catalog Number: **KHC2875**

General Information

Sample type:
FFPE tissue
Cited sample type:
Reactivity:
Human, Mouse, Rat
Cited Reactivity:

Assay type:
Immunohistochemistry
Primary antibody type:
Rabbit Polyclonal
Secondary antibody type:
Polymer-HRP-Goat anti-Rabbit

Kit Component

Component	Size	Concentration
Antigen Retrieval Buffer	100 mL	50×
Washing Buffer	100 mL ×2	20×
Blocking Buffer	5 mL	RTU
Primary Antibody	5 mL	RTU
Secondary Antibody	5 mL	RTU
Chromogen Component A	0.2 mL	RTU
Chromogen Component B	4 mL	RTU
Signal Enhancer	5 mL	RTU
Counter Staining Reagent	5 mL	RTU
Mounting Media	5 mL	RTU
Control Slide	1 slide (Optional)	FFPE
Datasheet	1 Copy	
Manual	1 Copy	

Storage Instructions

All the reagents are stored at 2-8°C. The kit is stable for 6 months from the date of receipt.

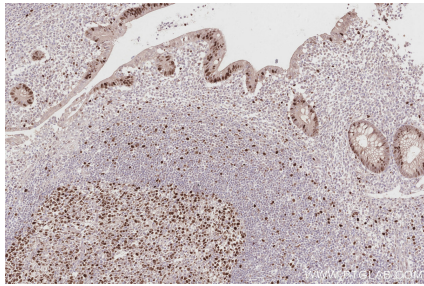
Background

TIPIN, also named as TIMELESS-interacting protein, is a 301 amino acid protein, which belongs to the CSM3 family. TIPIN Plays an important role in the control of DNA replication and the maintenance of replication fork stability. TIPIN forms a complex with TIMELESS and this complex regulates DNA replication processes under both normal and stress conditions, stabilizes replication forks and influences both CHEK1 phosphorylation and the intra-Sphase checkpoint in response to genotoxic stress.

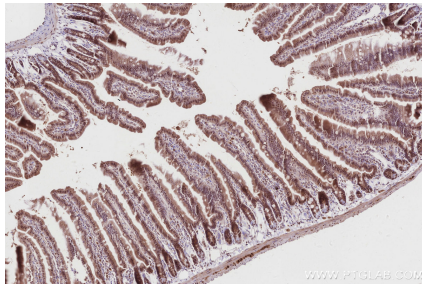
Synonyms

TIMELESS interacting protein, TIMELESS-interacting protein

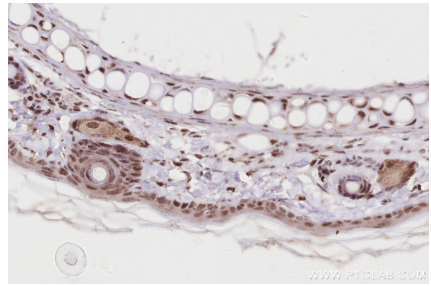
Selected Validation Data



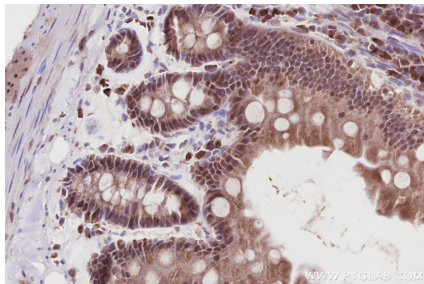
Immunohistochemical analysis of paraffin-embedded human appendicitis tissue slide using KHC2875 (TIPIN IHC Kit).



Immunohistochemical analysis of paraffin-embedded mouse small intestine tissue slide using KHC2875 (TIPIN IHC Kit).



Immunohistochemical analysis of paraffin-embedded rat skin tissue slide using KHC2875 (TIPIN IHC Kit).



Immunohistochemical analysis of paraffin-embedded rat small intestine tissue slide using KHC2875 (TIPIN IHC Kit).