

# IHC*easy* PSMD1 Ready-To-Use IHC Kit

Catalog Number: **KHC2839**

## General Information

Sample type:  
FFPE tissue  
Cited sample type:  
Reactivity:  
Human, Mouse, Rat  
Cited Reactivity:

Assay type:  
Immunohistochemistry  
Primary antibody type:  
Rabbit Recombinant  
Secondary antibody type:  
Polymer-HRP-Goat anti-Rabbit

## Kit Component

Component	Size	Concentration
Antigen Retrieval Buffer	100 mL	50×
Washing Buffer	100 mL ×2	20×
Blocking Buffer	5 mL	RTU
Primary Antibody	5 mL	RTU
Secondary Antibody	5 mL	RTU
Chromogen Component A	0.2 mL	RTU
Chromogen Component B	4 mL	RTU
Signal Enhancer	5 mL	RTU
Counter Staining Reagent	5 mL	RTU
Mounting Media	5 mL	RTU
Control Slide	1 slide (Optional)	FFPE
Datasheet	1 Copy	
Manual	1 Copy	

## Storage Instructions

All the reagents are stored at 2-8°C. The kit is stable for 6 months from the date of receipt.

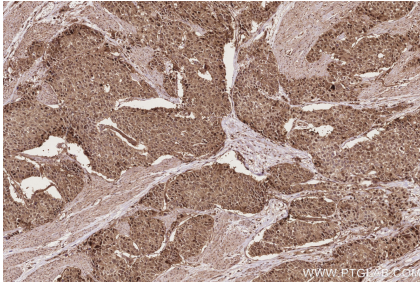
## Background

PSMD1 is a component of the 26S proteasome and contributes to its function regulation. PSMD1 performs an important role in the regulation of numerous cellular processes through the degradation of proteins targeted for breakdown through ubiquitin. PSMD1 has been found to be closely related to a variety of cancers such as lung adenocarcinoma and breast cancer.

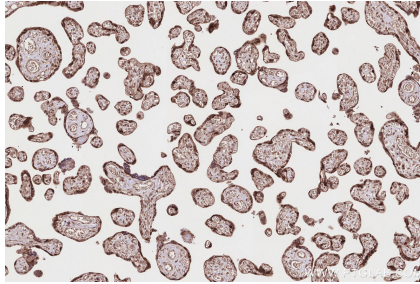
## Synonyms

26S proteasome non-ATPase regulatory subunit 1, PSMD 1

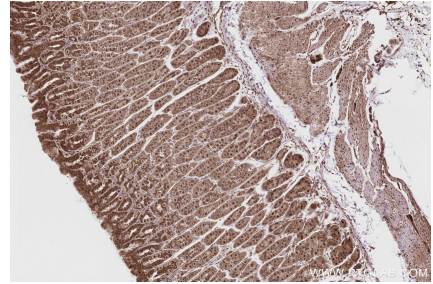
## Selected Validation Data



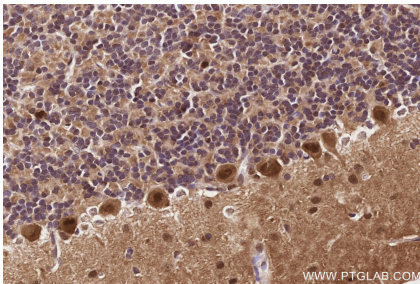
Immunohistochemical analysis of paraffin-embedded human stomach cancer tissue slide using KHC2839 (PSMD1 IHC Kit).



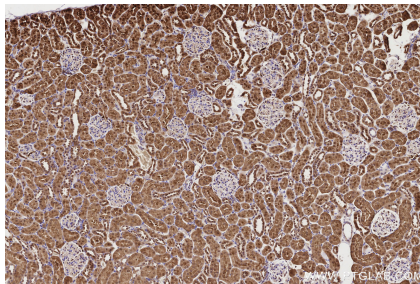
Immunohistochemical analysis of paraffin-embedded human placenta tissue slide using KHC2839 (PSMD1 IHC Kit).



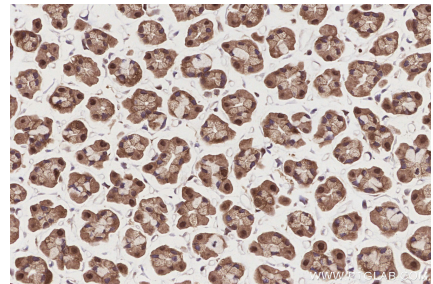
Immunohistochemical analysis of paraffin-embedded mouse stomach tissue slide using KHC2839 (PSMD1 IHC Kit).



Immunohistochemical analysis of paraffin-embedded rat cerebellum tissue slide using KHC2839 (PSMD1 IHC Kit).



Immunohistochemical analysis of paraffin-embedded rat kidney tissue slide using KHC2839 (PSMD1 IHC Kit).



Immunohistochemical analysis of paraffin-embedded rat stomach tissue slide using KHC2839 (PSMD1 IHC Kit).