

IHC*easy* PRMT6 Ready-To-Use IHC Kit

Catalog Number: **KHC2835**

General Information

Sample type:
FFPE tissue
Cited sample type:
Reactivity:
Human, Mouse
Cited Reactivity:

Assay type:
Immunohistochemistry
Primary antibody type:
Rabbit Polyclonal
Secondary antibody type:
Polymer-HRP-Goat anti-Rabbit

Kit Component

Component	Size	Concentration
Antigen Retrieval Buffer	100 mL	50×
Washing Buffer	100 mL ×2	20×
Blocking Buffer	5 mL	RTU
Primary Antibody	5 mL	RTU
Secondary Antibody	5 mL	RTU
Chromogen Component A	0.2 mL	RTU
Chromogen Component B	4 mL	RTU
Signal Enhancer	5 mL	RTU
Counter Staining Reagent	5 mL	RTU
Mounting Media	5 mL	RTU
Control Slide	1 slide (Optional)	FFPE
Datasheet	1 Copy	
Manual	1 Copy	

Storage Instructions

All the reagents are stored at 2-8°C. The kit is stable for 6 months from the date of receipt.

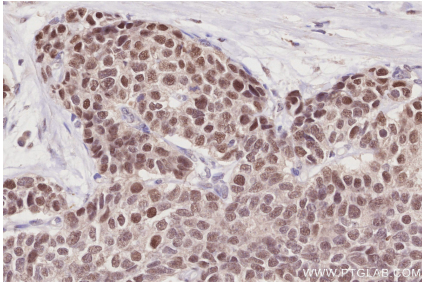
Background

PRMT6 belongs to the protein arginine methyltransferase (PRMT) family that catalyzes the mono- and dimethylation of arginine residues in a variety of proteins. PRMT6 is a nuclear protein and is predominantly expressed in testis and kidney.

Synonyms

EC:2.1.1.319, Heterogeneous nuclear ribonucleoprotein methyltransferase-like protein 6, Histone-arginine N-methyltransferase PRMT6, HRMT1L6, PRMT 6

Selected Validation Data



Immunohistochemical analysis of paraffin-embedded human stomach cancer tissue slide using KHC2835 (PRMT6 IHC Kit).