

IHC*easy* HMCN1 Ready-To-Use IHC Kit

Catalog Number: **KHC2831**

General Information

Sample type:
FFPE tissue
Cited sample type:
Reactivity:
Human, Mouse, Rat
Cited Reactivity:

Assay type:
Immunohistochemistry
Primary antibody type:
Rabbit Polyclonal
Secondary antibody type:
Polymer-HRP-Goat anti-Rabbit

Kit Component

Component	Size	Concentration
Antigen Retrieval Buffer	100 mL	50×
Washing Buffer	100 mL ×2	20×
Blocking Buffer	5 mL	RTU
Primary Antibody	5 mL	RTU
Secondary Antibody	5 mL	RTU
Chromogen Component A	0.2 mL	RTU
Chromogen Component B	4 mL	RTU
Signal Enhancer	5 mL	RTU
Counter Staining Reagent	5 mL	RTU
Mounting Media	5 mL	RTU
Control Slide	1 slide (Optional)	FFPE
Datasheet	1 Copy	
Manual	1 Copy	

Storage Instructions

All the reagents are stored at 2-8°C. The kit is stable for 6 months from the date of receipt.

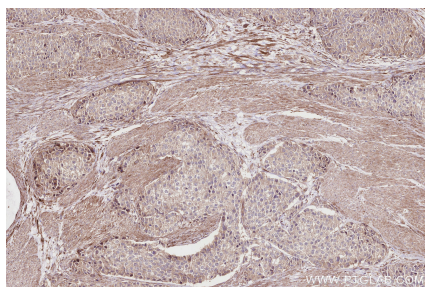
Background

Hemicentin-1 (HMCN1), also known as fibulin-6 (FBL-6), is an extracellular protein of the immunoglobulin superfamily. HMCN1 consists of a von Willebrand A domain, tandem immunoglobulin modules, tandem EGF modules, and a fibulin carboxy-terminal module. Mutations of HMCN1 gene may be associated with age-related macular degeneration. Three alternative transcripts encoding different HMCN1 isoforms have been described.

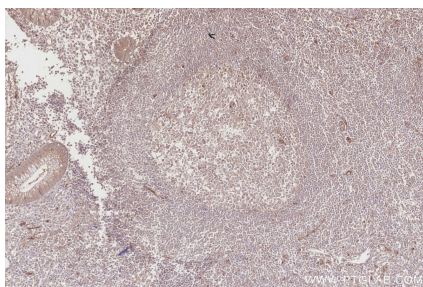
Synonyms

ARMD1, FBLN6, FIBL 6, FIBL6, FIBL-6

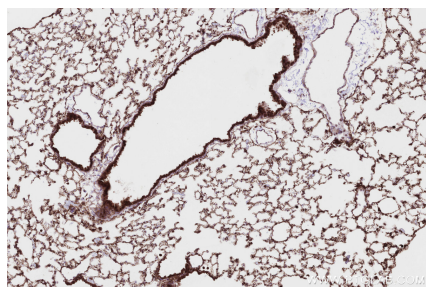
Selected Validation Data



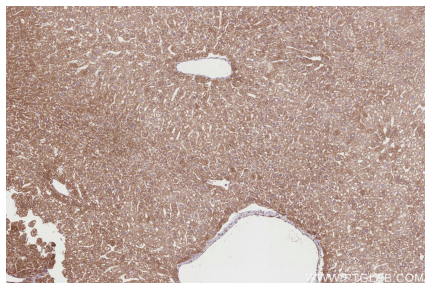
Immunohistochemical analysis of paraffin-embedded human stomach cancer tissue slide using KHC2831 (HMCN1 IHC Kit).



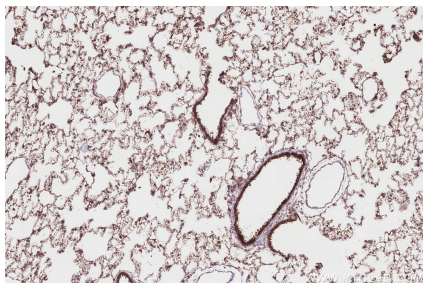
Immunohistochemical analysis of paraffin-embedded human appendicitis tissue slide using KHC2831 (HMCN1 IHC Kit).



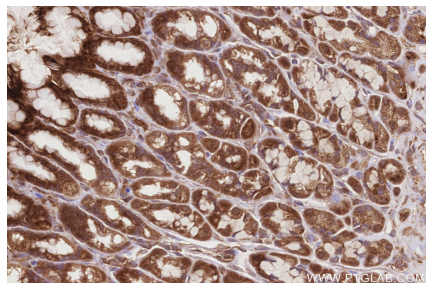
Immunohistochemical analysis of paraffin-embedded mouse lung tissue slide using KHC2831 (HMCN1 IHC Kit).



Immunohistochemical analysis of paraffin-embedded mouse liver tissue slide using KHC2831 (HMCN1 IHC Kit).



Immunohistochemical analysis of paraffin-embedded rat lung tissue slide using KHC2831 (HMCN1 IHC Kit).



Immunohistochemical analysis of paraffin-embedded rat stomach tissue slide using KHC2831 (HMCN1 IHC Kit).