

IHC*easy* FMNL2 Ready-To-Use IHC Kit

Catalog Number: **KHC2816**

General Information

Sample type:
FFPE tissue
Cited sample type:
Reactivity:
Human
Cited Reactivity:

Assay type:
Immunohistochemistry
Primary antibody type:
Mouse Monoclonal
Secondary antibody type:
Polymer-HRP-Goat anti-Mouse

Kit Component

Component	Size	Concentration
Antigen Retrieval Buffer	100 mL	50×
Washing Buffer	100 mL ×2	20×
Blocking Buffer	5 mL	RTU
Primary Antibody	5 mL	RTU
Secondary Antibody	5 mL	RTU
Chromogen Component A	0.2 mL	RTU
Chromogen Component B	4 mL	RTU
Signal Enhancer	5 mL	RTU
Counter Staining Reagent	5 mL	RTU
Mounting Media	5 mL	RTU
Control Slide	1 slide (Optional)	FFPE
Datasheet	1 Copy	
Manual	1 Copy	

Storage Instructions

All the reagents are stored at 2-8°C. The kit is stable for 6 months from the date of receipt.

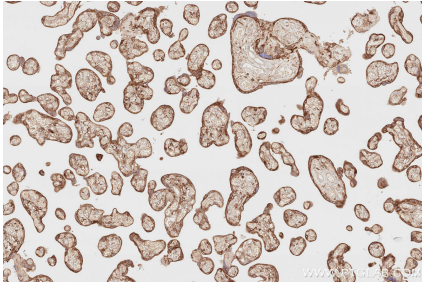
Background

Formin-like 2 (FMNL2), also known as FRL3 or FHOD2, a member of the diaphanous-related formins, contains a GTPase-binding domain and autoregulatory domains, and is proposed to function as a downstream effector of Rho family guanosine triphosphatases (GTPases). FMNL2 mRNA is expressed in many normal tissues and dysregulated in several cancers such as colorectal cancer, melanoma and involved in invasive behaviours and progression of cancer cells.

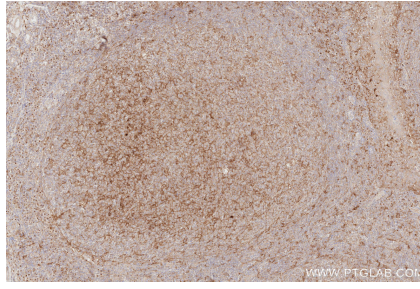
Synonyms

FHOD2, Formin homology 2 domain-containing protein 2, Formin-like protein 2, KIAA1902

Selected Validation Data



Immunohistochemical analysis of paraffin-embedded human placenta tissue slide using KHC2816 (FMNL2 IHC Kit).



Immunohistochemical analysis of paraffin-embedded human tonsillitis tissue slide using KHC2816 (FMNL2 IHC Kit).