

# IHC*easy* FEM1C Ready-To-Use IHC Kit

Catalog Number: **KHC2802**

## General Information

Sample type:  
FFPE tissue  
Cited sample type:  
Reactivity:  
Human, Mouse, Rat  
Cited Reactivity:

Assay type:  
Immunohistochemistry  
Primary antibody type:  
Rabbit Polyclonal  
Secondary antibody type:  
Polymer-HRP-Goat anti-Rabbit

## Kit Component

Component	Size	Concentration
Antigen Retrieval Buffer	100 mL	50×
Washing Buffer	100 mL ×2	20×
Blocking Buffer	5 mL	RTU
Primary Antibody	5 mL	RTU
Secondary Antibody	5 mL	RTU
Chromogen Component A	0.2 mL	RTU
Chromogen Component B	4 mL	RTU
Signal Enhancer	5 mL	RTU
Counter Staining Reagent	5 mL	RTU
Mounting Media	5 mL	RTU
Control Slide	1 slide (Optional)	FFPE
Datasheet	1 Copy	
Manual	1 Copy	

## Storage Instructions

All the reagents are stored at 2-8°C. The kit is stable for 6 months from the date of receipt.

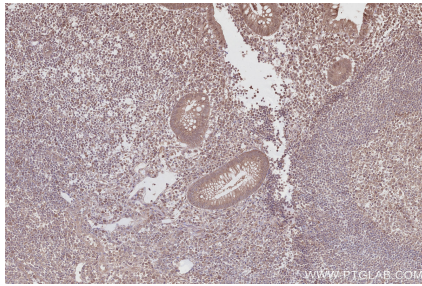
## Background

Protein fem-1 homolog C (FEM1C) is involved in protein modification and ubiquitination. Probable component of an E3 ubiquitin-protein ligase complex, in which it may act as a substrate recognition subunit. Highly expressed in kidney, cardiac tissue, skeletal muscle and testis. Expressed at lower levels in other tissues, including cartilage.

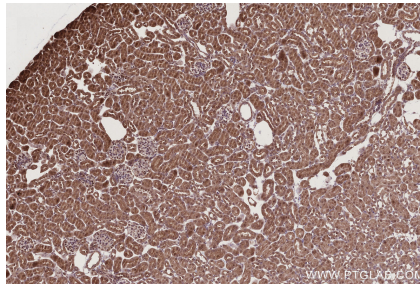
## Synonyms

FEM, FEM1, FEM1 gamma, FEM1A, FEM1-gamma

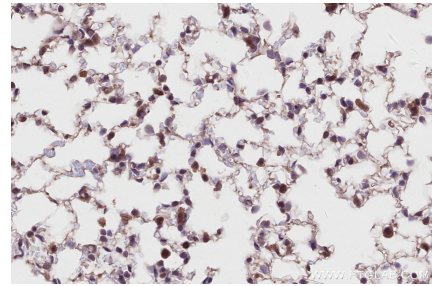
## Selected Validation Data



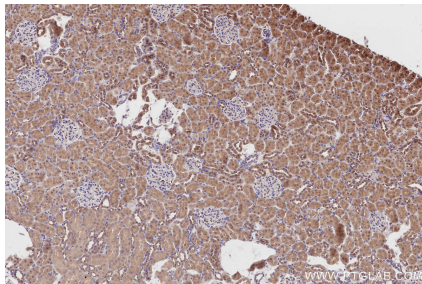
Immunohistochemical analysis of paraffin-embedded human appendicitis tissue slide using KHC2802 (FEM1C IHC Kit).



Immunohistochemical analysis of paraffin-embedded mouse kidney tissue slide using KHC2802 (FEM1C IHC Kit).



Immunohistochemical analysis of paraffin-embedded mouse lung tissue slide using KHC2802 (FEM1C IHC Kit).



Immunohistochemical analysis of paraffin-embedded rat kidney tissue slide using KHC2802 (FEM1C IHC Kit).