

# IHC*easy* CDCA7L Ready-To-Use IHC Kit

Catalog Number: **KHC2795**

## General Information

Sample type:  
FFPE tissue  
Cited sample type:  
Reactivity:  
Human  
Cited Reactivity:

Assay type:  
Immunohistochemistry  
Primary antibody type:  
Rabbit Recombinant  
Secondary antibody type:  
Polymer-HRP-Goat anti-Rabbit

## Kit Component

Component	Size	Concentration
Antigen Retrieval Buffer	100 mL	50×
Washing Buffer	100 mL ×2	20×
Blocking Buffer	5 mL	RTU
Primary Antibody	5 mL	RTU
Secondary Antibody	5 mL	RTU
Chromogen Component A	0.2 mL	RTU
Chromogen Component B	4 mL	RTU
Signal Enhancer	5 mL	RTU
Counter Staining Reagent	5 mL	RTU
Mounting Media	5 mL	RTU
Control Slide	1 slide (Optional)	FFPE
Datasheet	1 Copy	
Manual	1 Copy	

## Storage Instructions

All the reagents are stored at 2-8°C. The kit is stable for 6 months from the date of receipt.

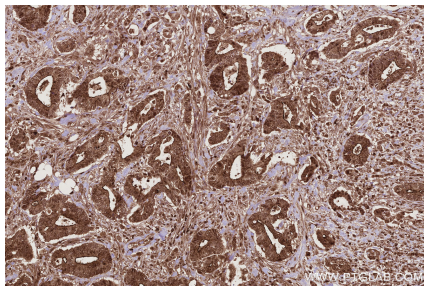
## Background

Cell division cycle-associated 7-like protein (CDCA7L) is also known as HR1 and JPO2 and belongs to the JPO protein family. CDCA7L is identified as a target gene of c-Myc and is frequently dysregulated in multiple cancers. CDCA7L can complement the c-Myc transformation-defective mutant W135E and potentiate Myc-mediated transformation. CDCA7L translocates from cytoplasm to nucleus under dexamethasone induction. CDCA7L is widely expressed.

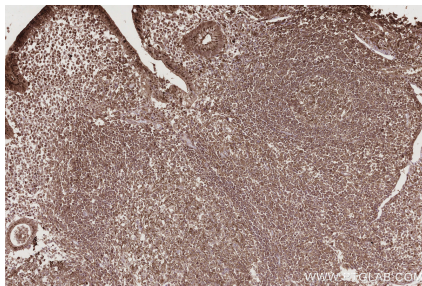
## Synonyms

Cell division cycle-associated 7-like protein, HR1, JPO2, Protein JPO2, R1

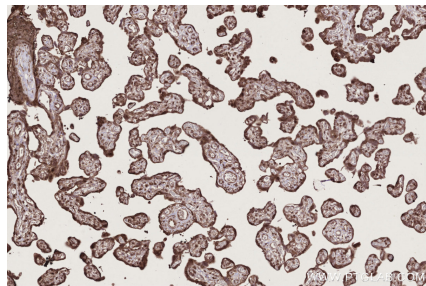
## Selected Validation Data



Immunohistochemical analysis of paraffin-embedded human rectal cancer tissue slide using KHC2795 (CDCA7L IHC Kit).



Immunohistochemical analysis of paraffin-embedded human appendicitis tissue slide using KHC2795 (CDCA7L IHC Kit).



Immunohistochemical analysis of paraffin-embedded human placenta tissue slide using KHC2795 (CDCA7L IHC Kit).