

# IHC*easy* SMARCD1 Ready-To-Use IHC Kit

Catalog Number: **KHC2794**

## General Information

Sample type:  
FFPE tissue  
Cited sample type:  
Reactivity:  
Human, Mouse, Rat  
Cited Reactivity:

Assay type:  
Immunohistochemistry  
Primary antibody type:  
Rabbit Polyclonal  
Secondary antibody type:  
Polymer-HRP-Goat anti-Rabbit

## Kit Component

Component	Size	Concentration
Antigen Retrieval Buffer	100 mL	50×
Washing Buffer	100 mL ×2	20×
Blocking Buffer	5 mL	RTU
Primary Antibody	5 mL	RTU
Secondary Antibody	5 mL	RTU
Chromogen Component A	0.2 mL	RTU
Chromogen Component B	4 mL	RTU
Signal Enhancer	5 mL	RTU
Counter Staining Reagent	5 mL	RTU
Mounting Media	5 mL	RTU
Control Slide	1 slide (Optional)	FFPE
Datasheet	1 Copy	
Manual	1 Copy	

## Storage Instructions

All the reagents are stored at 2-8°C. The kit is stable for 6 months from the date of receipt.

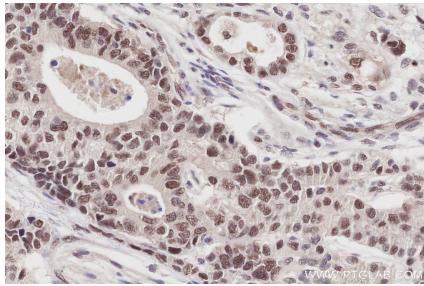
## Background

SMARCD1 belongs to the nuclear SWI/SNF chromatin remodeling complex, which regulates transcription and interacts with nucleolin in the nucleus. In addition, it's a member of the neural progenitors-specific chromatin remodeling complex (npBAF complex) and the neuron-specific chromatin remodeling complex (nBAF complex). It possesses a SWIB domain which is homologous to and shares a common fold with the p53-binding domain of MDM2, a cell cycle regulator which interacts with NPM1. SMARCD1 has a strong influence on the Vitamin D-mediated transcriptional activity from an enhancer Vitamin D receptor element (VDRE). And it can mediate critical interactions between nuclear receptors and the BRG1/SMARCA4 chromatin-remodeling complex for transactivation.

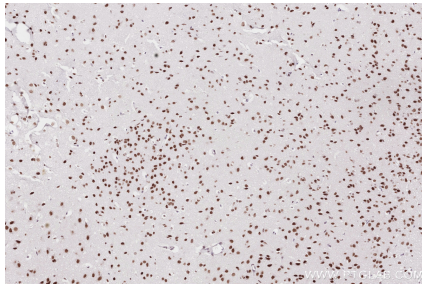
## Synonyms

60 kDa BRG-1/Brm-associated factor subunit A, BAF60A, BRG1-associated factor 60A, CRACD1, Rsc6p

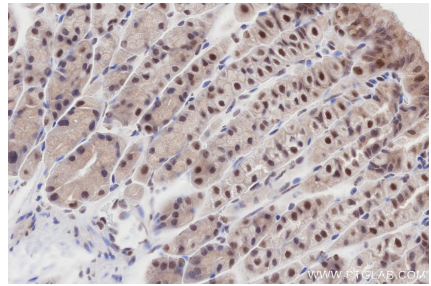
## Selected Validation Data



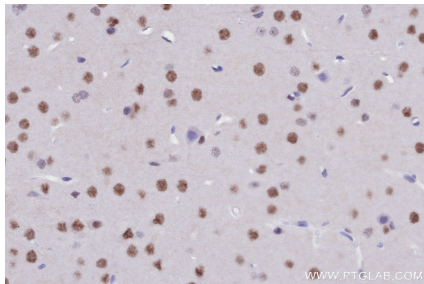
Immunohistochemical analysis of paraffin-embedded human stomach cancer tissue slide using KHC2794 (SMARCD1 IHC Kit).



Immunohistochemical analysis of paraffin-embedded mouse brain tissue slide using KHC2794 (SMARCD1 IHC Kit).



Immunohistochemical analysis of paraffin-embedded mouse stomach tissue slide using KHC2794 (SMARCD1 IHC Kit).



Immunohistochemical analysis of paraffin-embedded rat brain tissue slide using KHC2794 (SMARCD1 IHC Kit).