

# IHC*easy* OTUD5 Ready-To-Use IHC Kit

Catalog Number: **KHC2793**

## General Information

Sample type:  
FFPE tissue  
Cited sample type:  
Reactivity:  
Human, Mouse, Rat  
Cited Reactivity:

Assay type:  
Immunohistochemistry  
Primary antibody type:  
Rabbit Polyclonal  
Secondary antibody type:  
Polymer-HRP-Goat anti-Rabbit

## Kit Component

Component	Size	Concentration
Antigen Retrieval Buffer	100 mL	50×
Washing Buffer	100 mL ×2	20×
Blocking Buffer	5 mL	RTU
Primary Antibody	5 mL	RTU
Secondary Antibody	5 mL	RTU
Chromogen Component A	0.2 mL	RTU
Chromogen Component B	4 mL	RTU
Signal Enhancer	5 mL	RTU
Counter Staining Reagent	5 mL	RTU
Mounting Media	5 mL	RTU
Control Slide	1 slide (Optional)	FFPE
Datasheet	1 Copy	
Manual	1 Copy	

## Storage Instructions

All the reagents are stored at 2-8°C. The kit is stable for 6 months from the date of receipt.

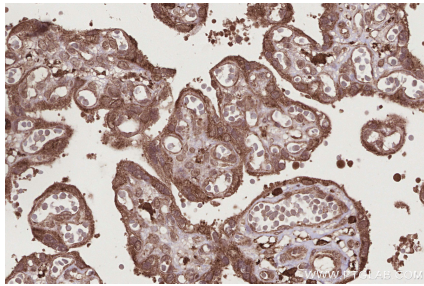
## Background

The deubiquitinating enzyme OTUD5, also known as deubiquitinating enzyme A (DUBA), is a member of the deubiquitinating enzyme OTU family. By deubiquitinating other proteins, OTUD5 is an important regulator of several physiological processes, such as immune signaling and DNA damage responses. The dysregulation of these processes can increase the risk of associated diseases, including inflammation, cancer and genetic disorders.

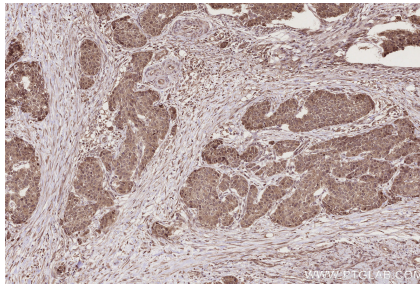
## Synonyms

DUBA, EC:3.4.19.12, OTU domain-containing protein 5, OTUD 5

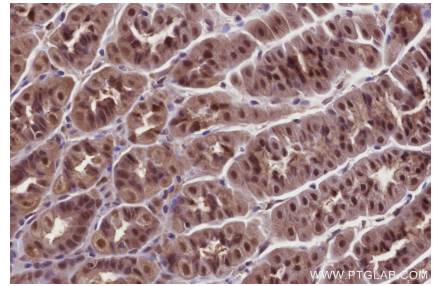
## Selected Validation Data



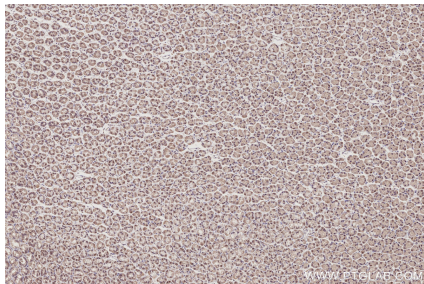
Immunohistochemical analysis of paraffin-embedded human placenta tissue slide using KHC2793 (OTUD5 IHC Kit).



Immunohistochemical analysis of paraffin-embedded human stomach cancer tissue slide using KHC2793 (OTUD5 IHC Kit).



Immunohistochemical analysis of paraffin-embedded mouse stomach tissue slide using KHC2793 (OTUD5 IHC Kit).



Immunohistochemical analysis of paraffin-embedded rat stomach tissue slide using KHC2793 (OTUD5 IHC Kit).