

IHC*easy* CDCA5 Ready-To-Use IHC Kit

Catalog Number: **KHC2791**

General Information

Sample type:
FFPE tissue
Cited sample type:
Reactivity:
Human
Cited Reactivity:

Assay type:
Immunohistochemistry
Primary antibody type:
Mouse Monoclonal
Secondary antibody type:
Polymer-HRP-Goat anti-Mouse

Kit Component

Component	Size	Concentration
Antigen Retrieval Buffer	100 mL	50×
Washing Buffer	100 mL ×2	20×
Blocking Buffer	5 mL	RTU
Primary Antibody	5 mL	RTU
Secondary Antibody	5 mL	RTU
Chromogen Component A	0.2 mL	RTU
Chromogen Component B	4 mL	RTU
Signal Enhancer	5 mL	RTU
Counter Staining Reagent	5 mL	RTU
Mounting Media	5 mL	RTU
Control Slide	1 slide (Optional)	FFPE
Datasheet	1 Copy	
Manual	1 Copy	

Storage Instructions

All the reagents are stored at 2-8°C. The kit is stable for 6 months from the date of receipt.

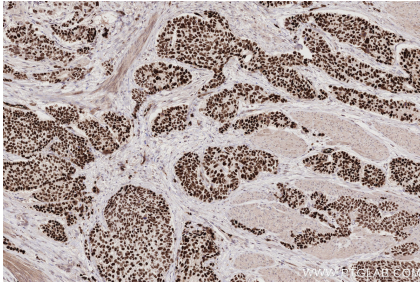
Background

Human cell division cycle associated 5 (CDCA5), also known as Sororin, is required for stable binding of cohesin to chromatid in the S and G2/M phases and degraded through anaphase-promoting complex-dependent ubiquitination in the G0/G1 phase. Suppression of CDCA5 expression with siRNAs inhibited the growth of lung cancer cells. CDCA5 positivity is an independent prognostic factor for lung cancer patients.

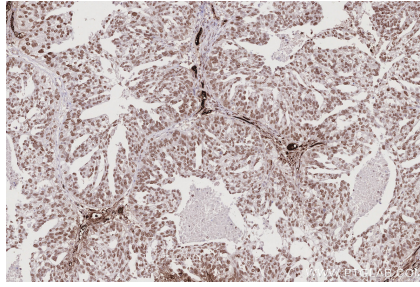
Synonyms

Cell division cycle-associated protein 5, p35, Sororin

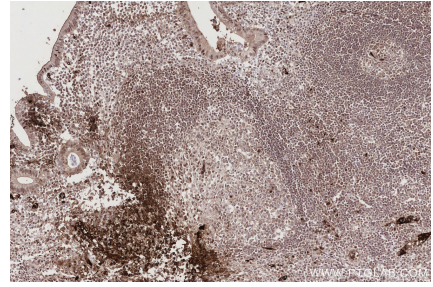
Selected Validation Data



Immunohistochemical analysis of paraffin-embedded human stomach cancer tissue slide using KHC2791 (CDCA5 IHC Kit).



Immunohistochemical analysis of paraffin-embedded human ovary cancer tissue slide using KHC2791 (CDCA5 IHC Kit).



Immunohistochemical analysis of paraffin-embedded human appendicitis tissue slide using KHC2791 (CDCA5 IHC Kit).