

IHC*easy* HOOK2 Ready-To-Use IHC Kit

Catalog Number: **KHC2788**

General Information

Sample type:
FFPE tissue
Cited sample type:
Reactivity:
Human, Rat
Cited Reactivity:

Assay type:
Immunohistochemistry
Primary antibody type:
Rabbit Polyclonal
Secondary antibody type:
Polymer-HRP-Goat anti-Rabbit

Kit Component

Component	Size	Concentration
Antigen Retrieval Buffer	100 mL	50×
Washing Buffer	100 mL ×2	20×
Blocking Buffer	5 mL	RTU
Primary Antibody	5 mL	RTU
Secondary Antibody	5 mL	RTU
Chromogen Component A	0.2 mL	RTU
Chromogen Component B	4 mL	RTU
Signal Enhancer	5 mL	RTU
Counter Staining Reagent	5 mL	RTU
Mounting Media	5 mL	RTU
Control Slide	1 slide (Optional)	FFPE
Datasheet	1 Copy	
Manual	1 Copy	

Storage Instructions

All the reagents are stored at 2-8°C. The kit is stable for 6 months from the date of receipt.

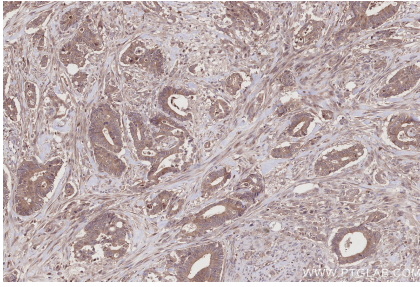
Background

HOOK2 (hook microtubule-tethering protein 2) is a microtubule-binding protein belonging to the Hook family of proteins. Hook2 normally functions by attaching microtubules to subcellular structures and is involved in a variety of cellular processes, including endosomal/lysosomal processing, Golgi and centrosomal organization, and functional maintenance. Hook2 is required for the assembly of the dynamin-dynamic actin complex and also plays an important role in regulating PAR6 α recruitment to centrosomes to bridge microtubules and the aPKC/PAR complex. Therefore, it may be relevant to cell migration, organelle organization, and signaling-related diseases.

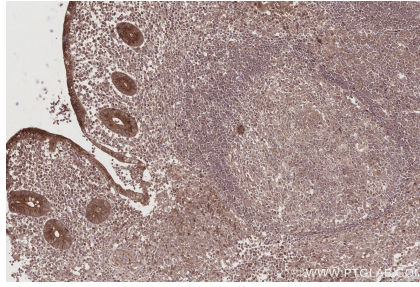
Synonyms

h hook2, hHK2, h-hook2, HK2, hook homolog 2 (Drosophila)

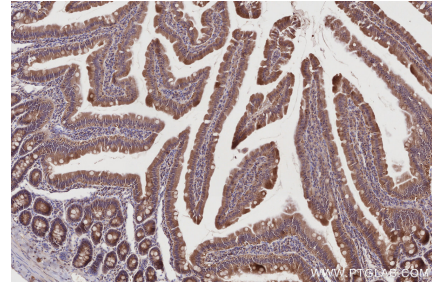
Selected Validation Data



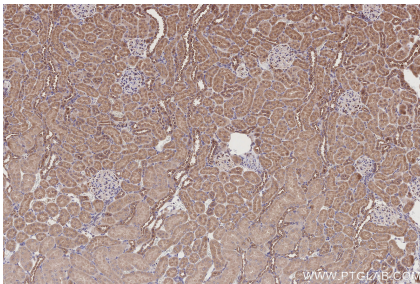
Immunohistochemical analysis of paraffin-embedded human rectal cancer tissue slide using KHC2788 (HOOK2 IHC Kit).



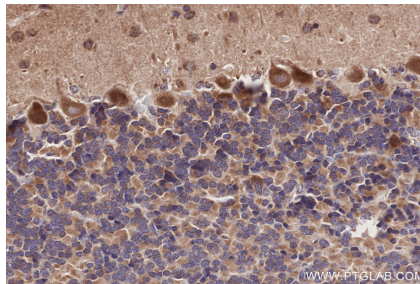
Immunohistochemical analysis of paraffin-embedded human appendicitis tissue slide using KHC2788 (HOOK2 IHC Kit).



Immunohistochemical analysis of paraffin-embedded rat small intestine tissue slide using KHC2788 (HOOK2 IHC Kit).



Immunohistochemical analysis of paraffin-embedded rat kidney tissue slide using KHC2788 (HOOK2 IHC Kit).



Immunohistochemical analysis of paraffin-embedded rat cerebellum tissue slide using KHC2788 (HOOK2 IHC Kit).