

# IHC*easy* PGT Ready-To-Use IHC Kit

Catalog Number: **KHC2768**

## General Information

Sample type:  
FFPE tissue  
Cited sample type:  
Reactivity:  
Human, Mouse  
Cited Reactivity:

Assay type:  
Immunohistochemistry  
Primary antibody type:  
Rabbit Recombinant  
Secondary antibody type:  
Polymer-HRP-Goat anti-Rabbit

## Kit Component

| Component                | Size               | Concentration |
|--------------------------|--------------------|---------------|
| Antigen Retrieval Buffer | 100 mL             | 50×           |
| Washing Buffer           | 100 mL ×2          | 20×           |
| Blocking Buffer          | 5 mL               | RTU           |
| Primary Antibody         | 5 mL               | RTU           |
| Secondary Antibody       | 5 mL               | RTU           |
| Chromogen Component A    | 0.2 mL             | RTU           |
| Chromogen Component B    | 4 mL               | RTU           |
| Signal Enhancer          | 5 mL               | RTU           |
| Counter Staining Reagent | 5 mL               | RTU           |
| Mounting Media           | 5 mL               | RTU           |
| Control Slide            | 1 slide (Optional) | FFPE          |
| Datasheet                | 1 Copy             |               |
| Manual                   | 1 Copy             |               |

## Storage Instructions

All the reagents are stored at 2-8°C. The kit is stable for 6 months from the date of receipt.

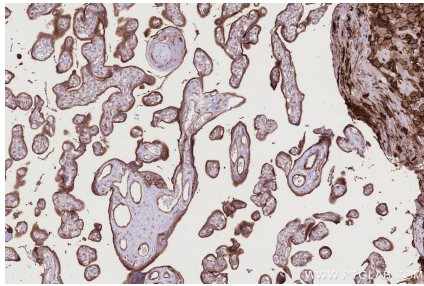
## Background

Prostaglandin transporter (PGT), also known as SLCO2A1, has been identified as a functional prostaglandin (PG) carrier that mediates either the release of newly-synthesized PGs by cells and/or the uptake of PGs prior to intracellular oxidation. Northern blot analysis revealed that PGT mRNA has broad tissue distribution, suggesting its role in the transport and/ or metabolic clearance of PG in diverse tissues.

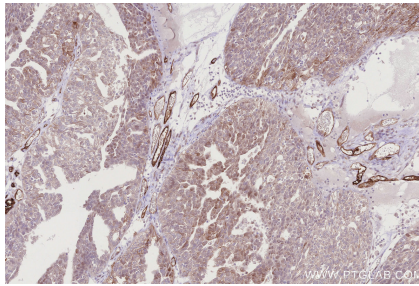
## Synonyms

SLCO2A1, OATP2A1, PHOAR2

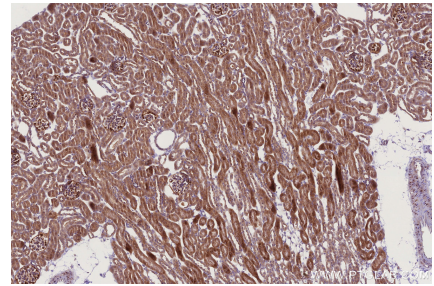
## Selected Validation Data



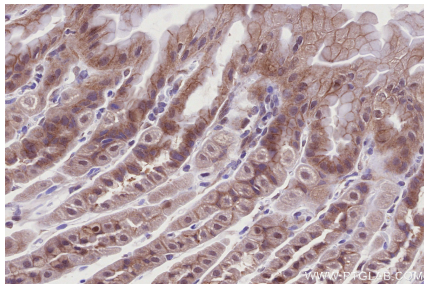
Immunohistochemical analysis of paraffin-embedded human placenta tissue slide using KHC2768 (PGT IHC Kit).



Immunohistochemical analysis of paraffin-embedded human ovary cancer tissue slide using KHC2768 (PGT IHC Kit).



Immunohistochemical analysis of paraffin-embedded mouse kidney tissue slide using KHC2768 (PGT IHC Kit).



Immunohistochemical analysis of paraffin-embedded mouse stomach tissue slide using KHC2768 (PGT IHC Kit).