

IHC*easy* MADD Ready-To-Use IHC Kit

Catalog Number: **KHC2741**

General Information

Sample type:
FFPE tissue
Cited sample type:
Reactivity:
Human, Mouse
Cited Reactivity:

Assay type:
Immunohistochemistry
Primary antibody type:
Rabbit Polyclonal
Secondary antibody type:
Polymer-HRP-Goat anti-Rabbit

Kit Component

Component	Size	Concentration
Antigen Retrieval Buffer	100 mL	50×
Washing Buffer	100 mL ×2	20×
Blocking Buffer	5 mL	RTU
Primary Antibody	5 mL	RTU
Secondary Antibody	5 mL	RTU
Chromogen Component A	0.2 mL	RTU
Chromogen Component B	4 mL	RTU
Signal Enhancer	5 mL	RTU
Counter Staining Reagent	5 mL	RTU
Mounting Media	5 mL	RTU
Control Slide	1 slide (Optional)	FFPE
Datasheet	1 Copy	
Manual	1 Copy	

Storage Instructions

All the reagents are stored at 2-8°C. The kit is stable for 6 months from the date of receipt.

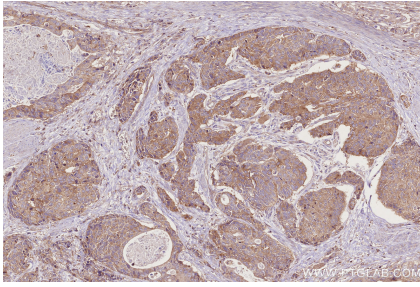
Background

MADD, MAP kinase-activating death domain protein, belongs to the DENN family, which regulates the Rab family is small GTPases. MADD plays a role in synaptic vesicle formation and in vesicle trafficking at the neuromuscular junction. MADD is also involved in TNFA-mediated activation of the MAPK pathway, including ERK1/2. KIF1B β - and KIF1A-mediated axonal transport of presynaptic regulator Rab3 occurs in a GTP-dependent manner through MADD.

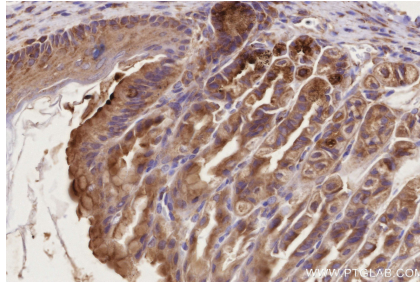
Synonyms

MADD, DENN, FLJ35600, FLJ36300, IG20

Selected Validation Data



Immunohistochemical analysis of paraffin-embedded human stomach cancer tissue slide using KHC2741 (MADD IHC Kit).



Immunohistochemical analysis of paraffin-embedded mouse stomach tissue slide using KHC2741 (MADD IHC Kit).