

# IHC*easy* SCFD1 Ready-To-Use IHC Kit

Catalog Number: **KHC2736**

## General Information

Sample type:  
FFPE tissue  
Cited sample type:  
Reactivity:  
Human, Mouse  
Cited Reactivity:

Assay type:  
Immunohistochemistry  
Primary antibody type:  
Rabbit Polyclonal  
Secondary antibody type:  
Polymer-HRP-Goat anti-Rabbit

## Kit Component

| Component                | Size               | Concentration |
|--------------------------|--------------------|---------------|
| Antigen Retrieval Buffer | 100 mL             | 50×           |
| Washing Buffer           | 100 mL ×2          | 20×           |
| Blocking Buffer          | 5 mL               | RTU           |
| Primary Antibody         | 5 mL               | RTU           |
| Secondary Antibody       | 5 mL               | RTU           |
| Chromogen Component A    | 0.2 mL             | RTU           |
| Chromogen Component B    | 4 mL               | RTU           |
| Signal Enhancer          | 5 mL               | RTU           |
| Counter Staining Reagent | 5 mL               | RTU           |
| Mounting Media           | 5 mL               | RTU           |
| Control Slide            | 1 slide (Optional) | FFPE          |
| Datasheet                | 1 Copy             |               |
| Manual                   | 1 Copy             |               |

## Storage Instructions

All the reagents are stored at 2-8°C. The kit is stable for 6 months from the date of receipt.

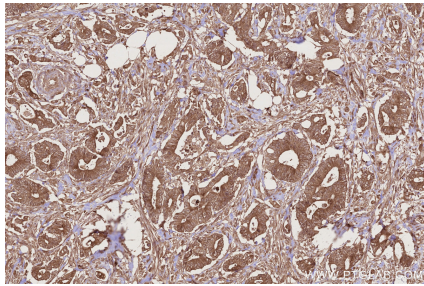
## Background

SCFD1, also named as C14orf163, KIAA0917, STXBP1L2, Sly1p and SLY1, belongs to the STXBP/unc-18/SEC1 family. It is a component of the syntaxin-5 SNARE complex which regulates the early secretory pathway of eukaryotic cells at the level of endoplasmic reticulum (ER) to Golgi transport. (PMID:21242315) SCFD1 plays a role in SNARE-pin assembly and Golgi-to-ER retrograde transport via its interaction with COG4. It is involved in vesicular transport between the endoplasmic reticulum and the Golgi.

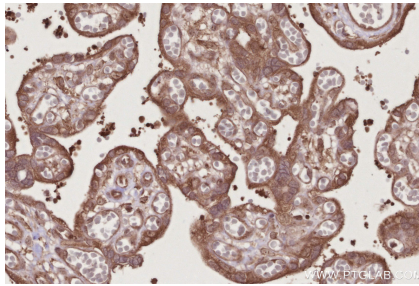
## Synonyms

SCFD1, C14orf163, FKSG23, KIAA0917, Sec1 family domain-containing protein 1

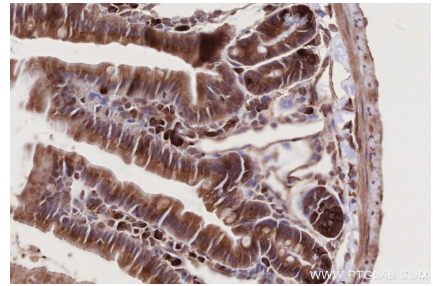
## Selected Validation Data



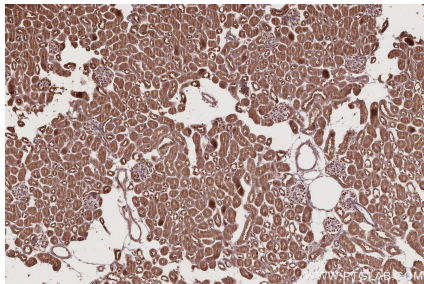
Immunohistochemical analysis of paraffin-embedded human rectal cancer tissue slide using KHC2736 (SCFD1 IHC Kit).



Immunohistochemical analysis of paraffin-embedded human placenta tissue slide using KHC2736 (SCFD1 IHC Kit).



Immunohistochemical analysis of paraffin-embedded mouse small intestine tissue slide using KHC2736 (SCFD1 IHC Kit).



Immunohistochemical analysis of paraffin-embedded mouse kidney tissue slide using KHC2736 (SCFD1 IHC Kit).