

IHC*easy* PIP4K2C Ready-To-Use IHC Kit

Catalog Number: **KHC2709**

General Information

Sample type:
FFPE tissue
Cited sample type:
Reactivity:
Human, Mouse
Cited Reactivity:

Assay type:
Immunohistochemistry
Primary antibody type:
Rabbit Polyclonal
Secondary antibody type:
Polymer-HRP-Goat anti-Rabbit

Kit Component

Component	Size	Concentration
Antigen Retrieval Buffer	100 mL	50×
Washing Buffer	100 mL ×2	20×
Blocking Buffer	5 mL	RTU
Primary Antibody	5 mL	RTU
Secondary Antibody	5 mL	RTU
Chromogen Component A	0.2 mL	RTU
Chromogen Component B	4 mL	RTU
Signal Enhancer	5 mL	RTU
Counter Staining Reagent	5 mL	RTU
Mounting Media	5 mL	RTU
Control Slide	1 slide (Optional)	FFPE
Datasheet	1 Copy	
Manual	1 Copy	

Storage Instructions

All the reagents are stored at 2-8°C. The kit is stable for 6 months from the date of receipt.

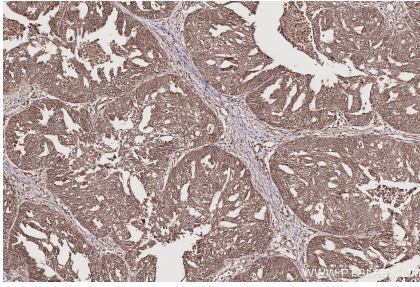
Background

PIP4K2C is involved in several processes, including 1-phosphatidyl-1D-myo-inositol 4,5-bisphosphate biosynthetic process; negative regulation of 1-phosphatidylinositol-4-phosphate 5-kinase activity; and positive regulation of autophagosome assembly. PIP4Ks negatively regulate insulin signaling through a catalytic-independent mechanism.

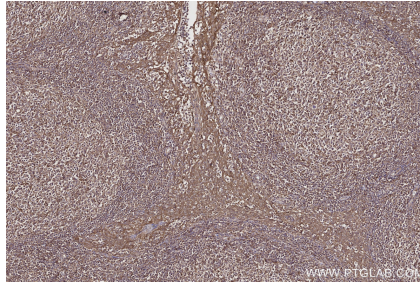
Synonyms

PIP4K2C, EC:2.7.1.149, Phosphatidylinositol 5-phosphate 4-kinase type II gamma, Phosphatidylinositol 5-phosphate 4-kinase type-2 gamma, PI(5)P 4-kinase type II gamma

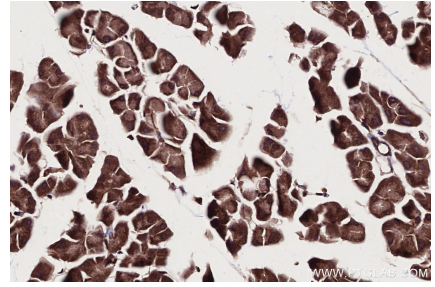
Selected Validation Data



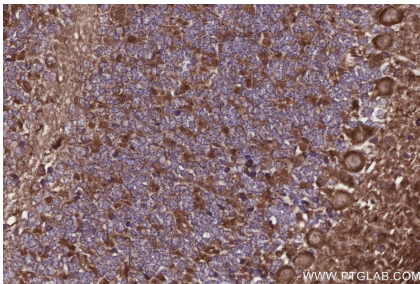
Immunohistochemical analysis of paraffin-embedded human ovary cancer tissue slide using KHC2709 (PIP4K2C IHC Kit).



Immunohistochemical analysis of paraffin-embedded human tonsillitis tissue slide using KHC2709 (PIP4K2C IHC Kit).



Immunohistochemical analysis of paraffin-embedded mouse pancreas tissue slide using KHC2709 (PIP4K2C IHC Kit).



Immunohistochemical analysis of paraffin-embedded mouse cerebellum tissue slide using KHC2709 (PIP4K2C IHC Kit).