

# IHC*easy* MPLKIP/TTDN1 Ready-To-Use IHC Kit

Catalog Number: **KHC2706**

## General Information

Sample type:  
FFPE tissue  
Cited sample type:  
Reactivity:  
Human, Mouse, Rat  
Cited Reactivity:

Assay type:  
Immunohistochemistry  
Primary antibody type:  
Rabbit Polyclonal  
Secondary antibody type:  
Polymer-HRP-Goat anti-Rabbit

## Kit Component

Component	Size	Concentration
Antigen Retrieval Buffer	100 mL	50×
Washing Buffer	100 mL ×2	20×
Blocking Buffer	5 mL	RTU
Primary Antibody	5 mL	RTU
Secondary Antibody	5 mL	RTU
Chromogen Component A	0.2 mL	RTU
Chromogen Component B	4 mL	RTU
Signal Enhancer	5 mL	RTU
Counter Staining Reagent	5 mL	RTU
Mounting Media	5 mL	RTU
Control Slide	1 slide (Optional)	FFPE
Datasheet	1 Copy	
Manual	1 Copy	

## Storage Instructions

All the reagents are stored at 2-8°C. The kit is stable for 6 months from the date of receipt.

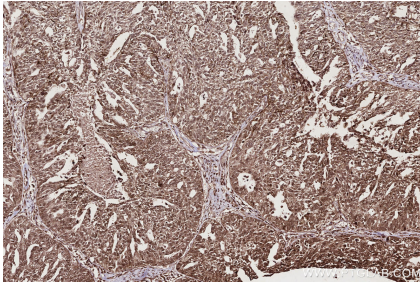
## Background

TTDN1 colocalizes with Plk1 at the centrosome in mitosis and the midbody during cytokinesis. It is phosphorylated by Cdk1 in mitosis, and this is required for its interaction with Plk1. Overexpression of TTDN1 or its knockdown by siRNA causes multi-polar spindles and multiple nuclei, suggesting that TTDN1 plays a role in regulating mitosis and cytokinesis. Mutations in the TTDN1 gene are associated with a distinct trichothiodystrophy phenotype.

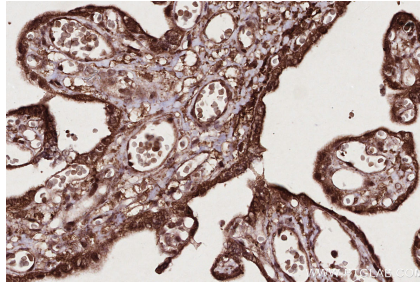
## Synonyms

C7orf11, TTDN1, ABHS, M-phase-specific PLK1-interacting protein, MPLKIP

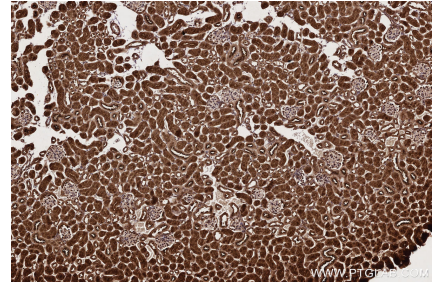
## Selected Validation Data



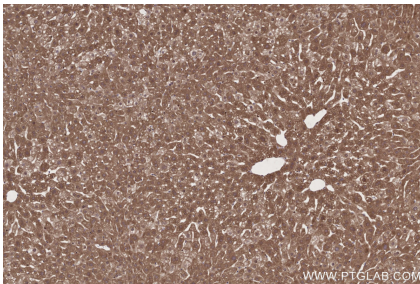
Immunohistochemical analysis of paraffin-embedded human ovary cancer tissue slide using KHC2706 (MPLKIP/TTDN1 IHC Kit).



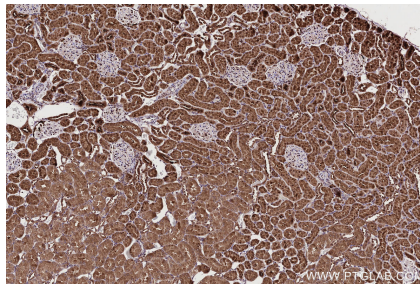
Immunohistochemical analysis of paraffin-embedded human placenta tissue slide using KHC2706 (MPLKIP/TTDN1 IHC Kit).



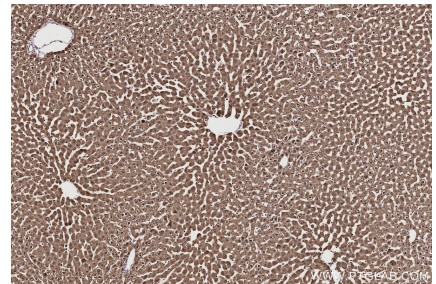
Immunohistochemical analysis of paraffin-embedded mouse kidney tissue slide using KHC2706 (MPLKIP/TTDN1 IHC Kit).



Immunohistochemical analysis of paraffin-embedded mouse liver tissue slide using KHC2706 (MPLKIP/TTDN1 IHC Kit).



Immunohistochemical analysis of paraffin-embedded rat kidney tissue slide using KHC2706 (MPLKIP/TTDN1 IHC Kit).



Immunohistochemical analysis of paraffin-embedded rat liver tissue slide using KHC2706 (MPLKIP/TTDN1 IHC Kit).