

# IHC*easy* MOSPD2 Ready-To-Use IHC Kit

Catalog Number: **KHC2700**

## General Information

Sample type:  
FFPE tissue  
Cited sample type:  
Reactivity:  
Human, Mouse, Rat  
Cited Reactivity:

Assay type:  
Immunohistochemistry  
Primary antibody type:  
Rabbit Recombinant  
Secondary antibody type:  
Polymer-HRP-Goat anti-Rabbit

## Kit Component

Component	Size	Concentration
Antigen Retrieval Buffer	100 mL	50×
Washing Buffer	100 mL ×2	20×
Blocking Buffer	5 mL	RTU
Primary Antibody	5 mL	RTU
Secondary Antibody	5 mL	RTU
Chromogen Component A	0.2 mL	RTU
Chromogen Component B	4 mL	RTU
Signal Enhancer	5 mL	RTU
Counter Staining Reagent	5 mL	RTU
Mounting Media	5 mL	RTU
Control Slide	1 slide (Optional)	FFPE
Datasheet	1 Copy	
Manual	1 Copy	

## Storage Instructions

All the reagents are stored at 2-8°C. The kit is stable for 6 months from the date of receipt.

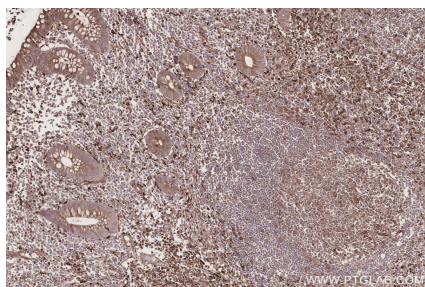
## Background

MOSPD2 is a 518-amino acid protein containing an N-terminal CRAL/TRIO domain, a major sperm protein (MSP) domain, and a potential C-terminal transmembrane domain. MOSPD2 is a member of the vesicle-associated membrane protein-associated protein (VAP) family and one of the endoplasmic reticulum (ER) receptors that function as tether proteins to bridge ER and other organelles to build contacts.

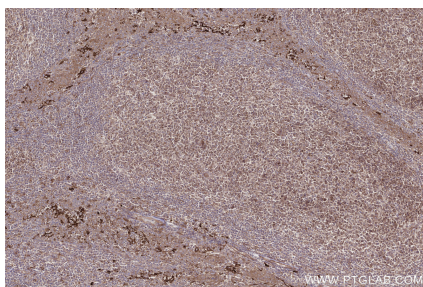
## Synonyms

MOSPD2, Motile sperm domain-containing protein 2

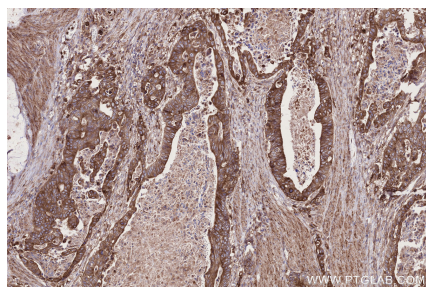
## Selected Validation Data



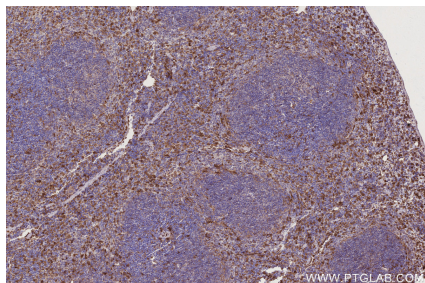
Immunohistochemical analysis of paraffin-embedded human appendicitis tissue slide using KHC2700 (MOSPD2 IHC Kit).



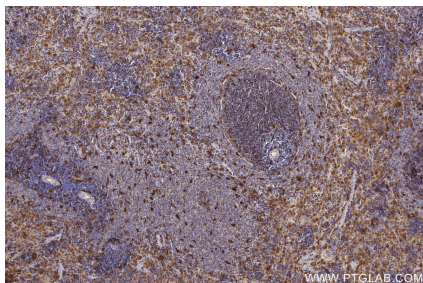
Immunohistochemical analysis of paraffin-embedded human tonsillitis tissue slide using KHC2700 (MOSPD2 IHC Kit).



Immunohistochemical analysis of paraffin-embedded human stomach cancer tissue slide using KHC2700 (MOSPD2 IHC Kit).



Immunohistochemical analysis of paraffin-embedded mouse spleen tissue slide using KHC2700 (MOSPD2 IHC Kit).



Immunohistochemical analysis of paraffin-embedded rat spleen tissue slide using KHC2700 (MOSPD2 IHC Kit).