

IHC*easy* CNNM3 Ready-To-Use IHC Kit

Catalog Number: **KHC2690**

General Information

Sample type:
FFPE tissue
Cited sample type:
Reactivity:
Human, Mouse, Rat
Cited Reactivity:

Assay type:
Immunohistochemistry
Primary antibody type:
Rabbit Polyclonal
Secondary antibody type:
Polymer-HRP-Goat anti-Rabbit

Kit Component

Component	Size	Concentration
Antigen Retrieval Buffer	100 mL	50×
Washing Buffer	100 mL ×2	20×
Blocking Buffer	5 mL	RTU
Primary Antibody	5 mL	RTU
Secondary Antibody	5 mL	RTU
Chromogen Component A	0.2 mL	RTU
Chromogen Component B	4 mL	RTU
Signal Enhancer	5 mL	RTU
Counter Staining Reagent	5 mL	RTU
Mounting Media	5 mL	RTU
Control Slide	1 slide (Optional)	FFPE
Datasheet	1 Copy	
Manual	1 Copy	

Storage Instructions

All the reagents are stored at 2-8°C. The kit is stable for 6 months from the date of receipt.

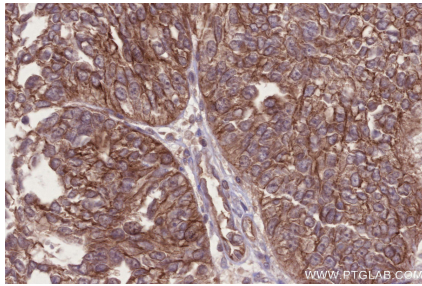
Background

Human Cyclin M 3 (CNNM3) has five transmembrane domains located at the N-terminal region and a C terminus containing a CBS pair domain and a cyclin box, both of which are part of the ACD region. CNNM3 magnesium transporter raises the intracellular magnesium content of cancer cells contributing to increased tumor growth and the acquisition of oncogenic properties.

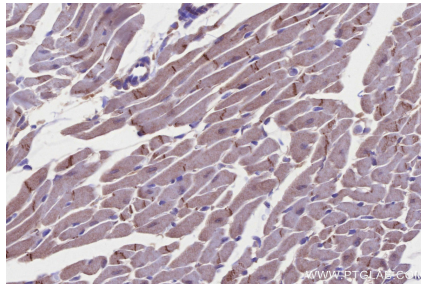
Synonyms

CNNM3,ACDP3,Ancient conserved domain-containing pr

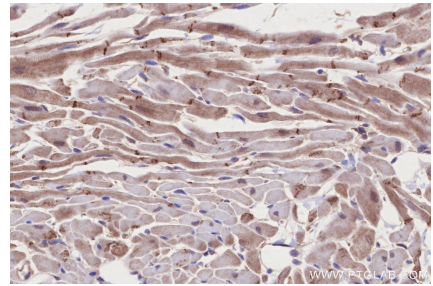
Selected Validation Data



Immunohistochemical analysis of paraffin-embedded human ovary cancer tissue slide using KHC2690 (CNNM3 IHC Kit).



Immunohistochemical analysis of paraffin-embedded mouse heart tissue slide using KHC2690 (CNNM3 IHC Kit).



Immunohistochemical analysis of paraffin-embedded rat heart tissue slide using KHC2690 (CNNM3 IHC Kit).