

IHC*easy* PRPF38A Ready-To-Use IHC Kit

Catalog Number: **KHC2684**

General Information

Sample type:
FFPE tissue
Cited sample type:
Reactivity:
Human, Mouse, Rat
Cited Reactivity:

Assay type:
Immunohistochemistry
Primary antibody type:
Rabbit Polyclonal
Secondary antibody type:
Polymer-HRP-Goat anti-Rabbit

Kit Component

Component	Size	Concentration
Antigen Retrieval Buffer	100 mL	50×
Washing Buffer	100 mL ×2	20×
Blocking Buffer	5 mL	RTU
Primary Antibody	5 mL	RTU
Secondary Antibody	5 mL	RTU
Chromogen Component A	0.2 mL	RTU
Chromogen Component B	4 mL	RTU
Signal Enhancer	5 mL	RTU
Counter Staining Reagent	5 mL	RTU
Mounting Media	5 mL	RTU
Control Slide	1 slide (Optional)	FFPE
Datasheet	1 Copy	
Manual	1 Copy	

Storage Instructions

All the reagents are stored at 2-8°C. The kit is stable for 6 months from the date of receipt.

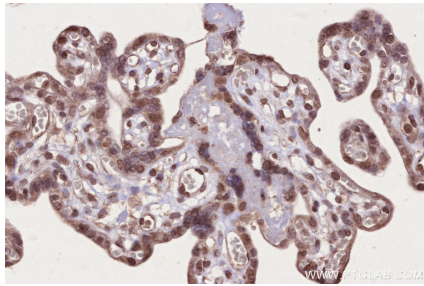
Background

PRPF38A was identified as an essential splicing factor in yeast and was found to be important for the progression of the splicing process to the first splicing step in this organism. PRPF38A is one of nine splicing factors that are specifically incorporated during the formation of the pre-catalytic spliceosomal B complex (B-specific proteins) and that are released again during spliceosome activation³. PRPF38A knockdown led to widespread intronic retention and altered splicing of transcripts of genes implicated in protein metabolism, mitosis, proteasome function and apoptosis.

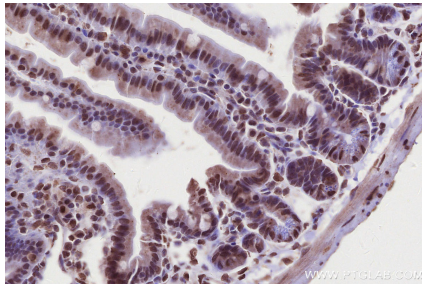
Synonyms

PRPF38A, Pre mRNA splicing factor 38A, Pre-mRNA-spli

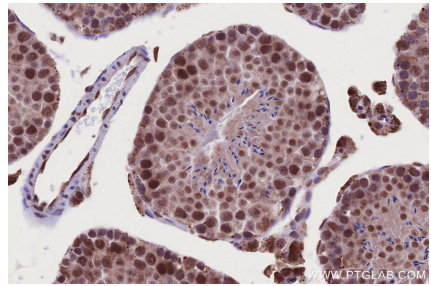
Selected Validation Data



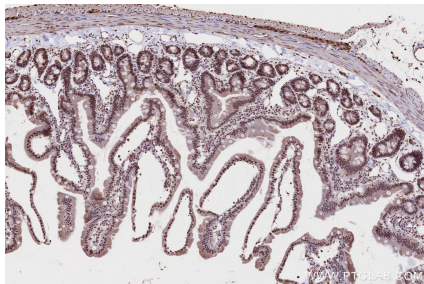
Immunohistochemical analysis of paraffin-embedded human placenta tissue slide using KHC2684 (PRPF38A IHC Kit).



Immunohistochemical analysis of paraffin-embedded mouse small intestine tissue slide using KHC2684 (PRPF38A IHC Kit).



Immunohistochemical analysis of paraffin-embedded mouse testis tissue slide using KHC2684 (PRPF38A IHC Kit).



Immunohistochemical analysis of paraffin-embedded rat small intestine tissue slide using KHC2684 (PRPF38A IHC Kit).