

IHC*easy* BOLL/BOULE Ready-To-Use IHC Kit

Catalog Number: **KHC2683**

General Information

Sample type:
FFPE tissue
Cited sample type:
Reactivity:
Human, Mouse, Rat
Cited Reactivity:

Assay type:
Immunohistochemistry
Primary antibody type:
Rabbit Polyclonal
Secondary antibody type:
Polymer-HRP-Goat anti-Rabbit

Kit Component

Component	Size	Concentration
Antigen Retrieval Buffer	100 mL	50×
Washing Buffer	100 mL ×2	20×
Blocking Buffer	5 mL	RTU
Primary Antibody	5 mL	RTU
Secondary Antibody	5 mL	RTU
Chromogen Component A	0.2 mL	RTU
Chromogen Component B	4 mL	RTU
Signal Enhancer	5 mL	RTU
Counter Staining Reagent	5 mL	RTU
Mounting Media	5 mL	RTU
Control Slide	1 slide (Optional)	FFPE
Datasheet	1 Copy	
Manual	1 Copy	

Storage Instructions

All the reagents are stored at 2-8°C. The kit is stable for 6 months from the date of receipt.

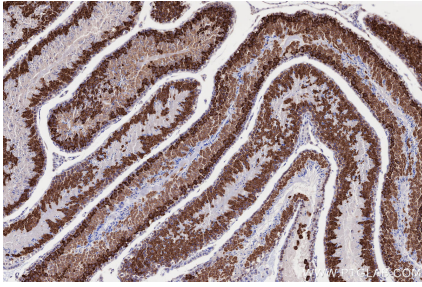
Background

BOULE, also called BOLL, belongs to the RRM DAZ family. BOULE has been identified as being involved in regulating the development and differentiation of germ cells and playing an essential role in infertility. BOULE is specifically expressed in testis, but not in early embryos, primordial germ cells, and spermatogonial cells. It is first expressed in the cytoplasm of spermatocytes and then persists through meiosis.

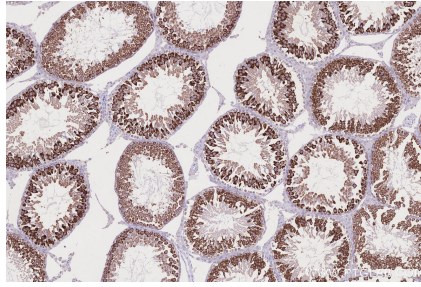
Synonyms

BOLL,BOULE,Protein boule-like

Selected Validation Data



Immunohistochemical analysis of paraffin-embedded mouse testis tissue slide using KHC2683 (BOLL/BOULE IHC Kit).



Immunohistochemical analysis of paraffin-embedded rat testis tissue slide using KHC2683 (BOLL/BOULE IHC Kit).