

IHC*easy* HACE1 Ready-To-Use IHC Kit

Catalog Number: **KHC2661**

General Information

Sample type:
FFPE tissue
Cited sample type:
Reactivity:
Human, Mouse, Rat
Cited Reactivity:

Assay type:
Immunohistochemistry
Primary antibody type:
Rabbit Polyclonal
Secondary antibody type:
Polymer-HRP-Goat anti-Rabbit

Kit Component

| Component | Size | Concentration |
|--------------------------|--------------------|---------------|
| Antigen Retrieval Buffer | 100 mL | 50× |
| Washing Buffer | 100 mL ×2 | 20× |
| Blocking Buffer | 5 mL | RTU |
| Primary Antibody | 5 mL | RTU |
| Secondary Antibody | 5 mL | RTU |
| Chromogen Component A | 0.2 mL | RTU |
| Chromogen Component B | 4 mL | RTU |
| Signal Enhancer | 5 mL | RTU |
| Counter Staining Reagent | 5 mL | RTU |
| Mounting Media | 5 mL | RTU |
| Control Slide | 1 slide (Optional) | FFPE |
| Datasheet | 1 Copy | |
| Manual | 1 Copy | |

Storage Instructions

All the reagents are stored at 2-8°C. The kit is stable for 6 months from the date of receipt.

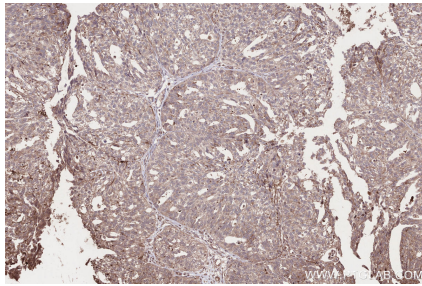
Background

HACE1(E3 ubiquitin-protein ligase HACE1) also named as KIAA1320, has a tumor-suppressor function dependent on its E3 ligase activity and controlling cell cycle progression during cell stress through degradation of cyclin D1. It belongs to the HECT family of E3 ubiquitin protein ligase.

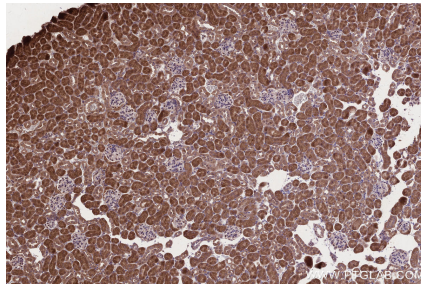
Synonyms

HACE1,E3 ubiquitin-protein ligase HACE1,EC:2.3.2.2

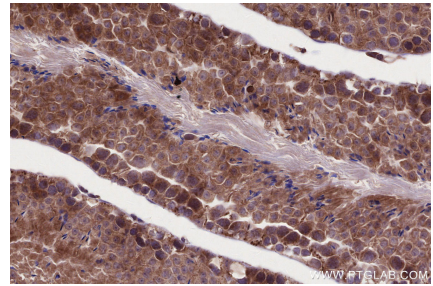
Selected Validation Data



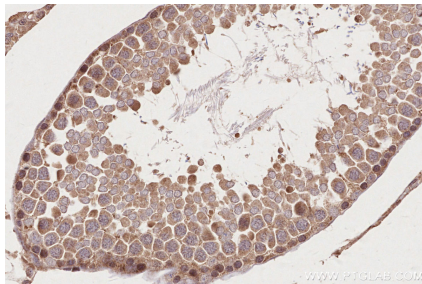
Immunohistochemical analysis of paraffin-embedded human ovary cancer tissue slide using KHC2661 (HACE1 IHC Kit).



Immunohistochemical analysis of paraffin-embedded mouse kidney tissue slide using KHC2661 (HACE1 IHC Kit).



Immunohistochemical analysis of paraffin-embedded mouse testis tissue slide using KHC2661 (HACE1 IHC Kit).



Immunohistochemical analysis of paraffin-embedded rat testis tissue slide using KHC2661 (HACE1 IHC Kit).