

IHC*easy* BRSK2 Ready-To-Use IHC Kit

Catalog Number: **KHC2652**

General Information

Sample type:
FFPE tissue
Cited sample type:
Reactivity:
Human, Mouse, Rat
Cited Reactivity:

Assay type:
Immunohistochemistry
Primary antibody type:
Rabbit Polyclonal
Secondary antibody type:
Polymer-HRP-Goat anti-Rabbit

Kit Component

| Component | Size | Concentration |
|--------------------------|--------------------|---------------|
| Antigen Retrieval Buffer | 100 mL | 50× |
| Washing Buffer | 100 mL ×2 | 20× |
| Blocking Buffer | 5 mL | RTU |
| Primary Antibody | 5 mL | RTU |
| Secondary Antibody | 5 mL | RTU |
| Chromogen Component A | 0.2 mL | RTU |
| Chromogen Component B | 4 mL | RTU |
| Signal Enhancer | 5 mL | RTU |
| Counter Staining Reagent | 5 mL | RTU |
| Mounting Media | 5 mL | RTU |
| Control Slide | 1 slide (Optional) | FFPE |
| Datasheet | 1 Copy | |
| Manual | 1 Copy | |

Storage Instructions

All the reagents are stored at 2-8°C. The kit is stable for 6 months from the date of receipt.

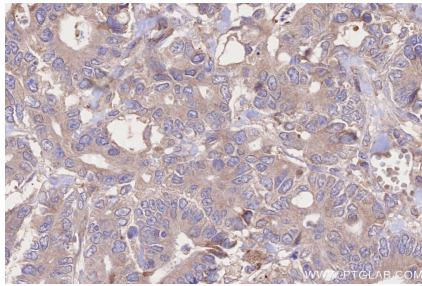
Background

BRSK2 is highly conserved from invertebrates to human, plays a key role in polarization of neurons and has been identified with different names: SAD1 is its closest homolog in C. elegans, serine/threonine kinase SADA alfa in rat, brain-selective kinase 2 and SAD-B in mouse and hsSAD1 and SAD1B in humans. In rat and mouse, BRSK2 is only detected in the brain and at low levels in the testis. This protein has a conserved function throughout the evolution.

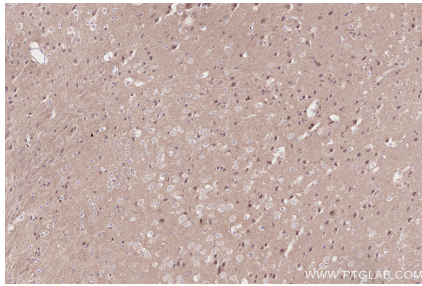
Synonyms

BRSK2, BR serine/threonine kinase 2, BR serine/threo

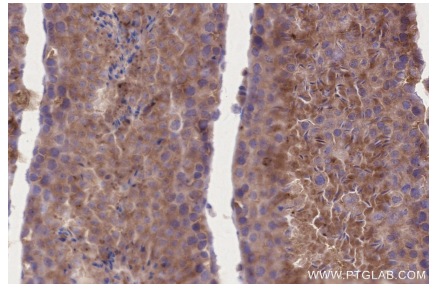
Selected Validation Data



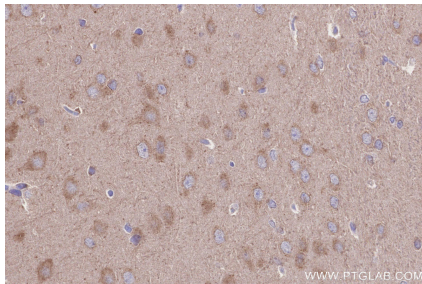
Immunohistochemical analysis of paraffin-embedded human rectal cancer tissue slide using KHC2652 (BRSK2 IHC Kit).



Immunohistochemical analysis of paraffin-embedded mouse brain tissue slide using KHC2652 (BRSK2 IHC Kit).



Immunohistochemical analysis of paraffin-embedded mouse testis tissue slide using KHC2652 (BRSK2 IHC Kit).



Immunohistochemical analysis of paraffin-embedded rat brain tissue slide using KHC2652 (BRSK2 IHC Kit).