

IHC*easy* HUWE1 Ready-To-Use IHC Kit

Catalog Number: **KHC2627**

General Information

Sample type:
FFPE tissue
Cited sample type:
Reactivity:
Human, Mouse, Rat
Cited Reactivity:

Assay type:
Immunohistochemistry
Primary antibody type:
Rabbit Polyclonal
Secondary antibody type:
Polymer-HRP-Goat anti-Rabbit

Kit Component

Component	Size	Concentration
Antigen Retrieval Buffer	100 mL	50×
Washing Buffer	100 mL ×2	20×
Blocking Buffer	5 mL	RTU
Primary Antibody	5 mL	RTU
Secondary Antibody	5 mL	RTU
Chromogen Component A	0.2 mL	RTU
Chromogen Component B	4 mL	RTU
Signal Enhancer	5 mL	RTU
Counter Staining Reagent	5 mL	RTU
Mounting Media	5 mL	RTU
Control Slide	1 slide (Optional)	FFPE
Datasheet	1 Copy	
Manual	1 Copy	

Storage Instructions

All the reagents are stored at 2-8°C. The kit is stable for 6 months from the date of receipt.

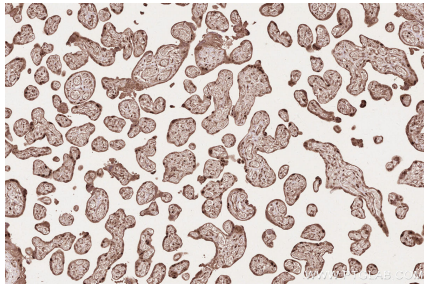
Background

HUWE1 encodes a HECT domain ubiquitin ligase which is a large protein has attracted considerable interest because several and quite disparate substrates have been assigned to this E3. It has a role in regulating Berg-mann glia differentiation and this ubiquitin ligase orchestrates the programming of the neural progenitors that give rise to neurons and glia in the cerebellum. HUWE1 is essential for proliferation of a subset of tumor cells, and negative regulator of TP53 during the colorectal carcinoma progression through the ubiquitination pathway mediated by the HECT domain. HUWE1 plays a critical role in lung cancer and increased HUWE1 expression is significantly associated with worse prognosis which suggest that HUWE1 might be a potential target for lung cancer therapy.

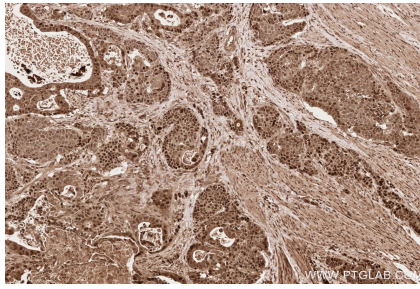
Synonyms

HUWE1,ARF binding protein 1,ARF BP1,ARF-binding pr

Selected Validation Data



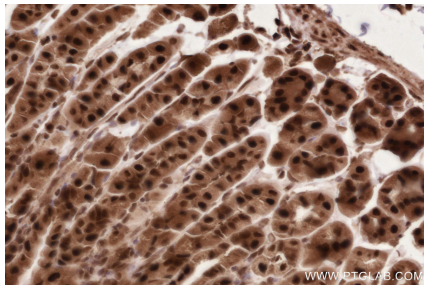
Immunohistochemical analysis of paraffin-embedded human placenta tissue slide using KHC2627 (HUWE1 IHC Kit).



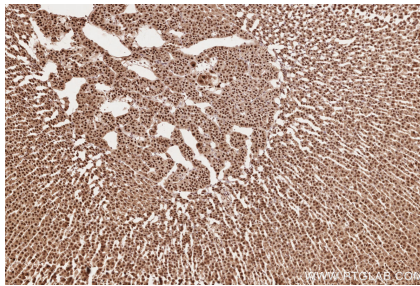
Immunohistochemical analysis of paraffin-embedded human stomach cancer tissue slide using KHC2627 (HUWE1 IHC Kit).



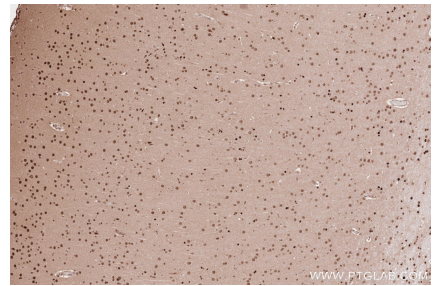
Immunohistochemical analysis of paraffin-embedded mouse adrenal gland tissue slide using KHC2627 (HUWE1 IHC Kit).



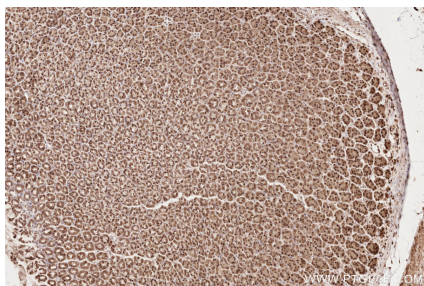
Immunohistochemical analysis of paraffin-embedded mouse stomach tissue slide using KHC2627 (HUWE1 IHC Kit).



Immunohistochemical analysis of paraffin-embedded rat adrenal gland tissue slide using KHC2627 (HUWE1 IHC Kit).



Immunohistochemical analysis of paraffin-embedded rat brain tissue slide using KHC2627 (HUWE1 IHC Kit).



Immunohistochemical analysis of paraffin-embedded rat stomach tissue slide using KHC2627 (HUWE1 IHC Kit).