

IHC*easy* APTX Ready-To-Use IHC Kit

Catalog Number: **KHC2617**

General Information

Sample type:
FFPE tissue
Cited sample type:
Reactivity:
Human, Rat
Cited Reactivity:

Assay type:
Immunohistochemistry
Primary antibody type:
Rabbit Polyclonal
Secondary antibody type:
Polymer-HRP-Goat anti-Rabbit

Kit Component

Component	Size	Concentration
Antigen Retrieval Buffer	100 mL	50×
Washing Buffer	100 mL ×2	20×
Blocking Buffer	5 mL	RTU
Primary Antibody	5 mL	RTU
Secondary Antibody	5 mL	RTU
Chromogen Component A	0.2 mL	RTU
Chromogen Component B	4 mL	RTU
Signal Enhancer	5 mL	RTU
Counter Staining Reagent	5 mL	RTU
Mounting Media	5 mL	RTU
Control Slide	1 slide (Optional)	FFPE
Datasheet	1 Copy	
Manual	1 Copy	

Storage Instructions

All the reagents are stored at 2-8°C. The kit is stable for 6 months from the date of receipt.

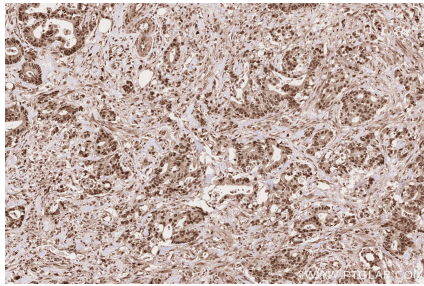
Background

APTX, also named as Aprataxin, is a nuclear protein, present in both the nucleoplasm and the nucleolus, which is a member of the histidine triad (HIT) superfamily. APTX is involved in DNA single-strand break repair, mediating protein-protein interactions with molecules responding to DNA damage. APTX contains three conserved domains: an N-terminal forkhead-associated (FHA) domain which mediates protein-protein interactions, a HIT domain that is similar to Hint, and a C-terminal zinc finger domain. Loss of function mutations in APTX, the gene encoding for Aprataxin, destabilize the Aprataxin protein and result in a rare neurological disorder known as ataxia-oculomotor apraxia, characterized by abnormal movements of the head and eyes.

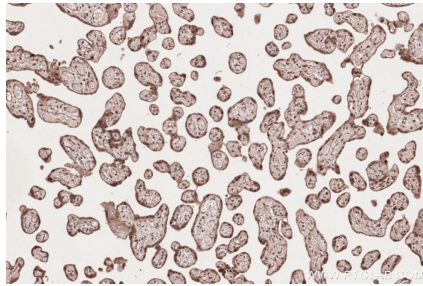
Synonyms

APTX, Aprataxin, AXA 1, AXA1, EC:3.6.1.71

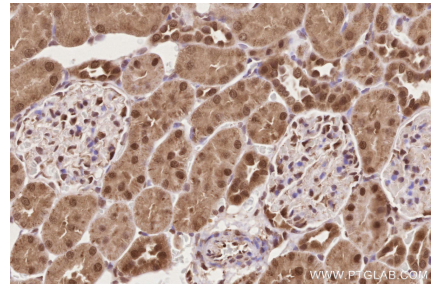
Selected Validation Data



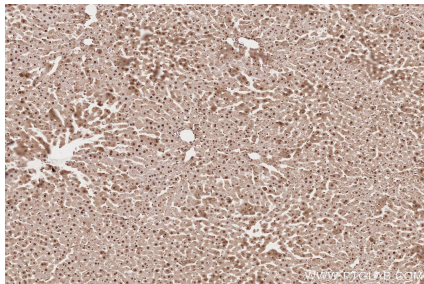
Immunohistochemical analysis of paraffin-embedded human rectal cancer tissue slide using KHC2617 (APTX IHC Kit).



Immunohistochemical analysis of paraffin-embedded human placenta tissue slide using KHC2617 (APTX IHC Kit).



Immunohistochemical analysis of paraffin-embedded rat kidney tissue slide using KHC2617 (APTX IHC Kit).



Immunohistochemical analysis of paraffin-embedded rat liver tissue slide using KHC2617 (APTX IHC Kit).