

# IHC*easy* OLFM4 Ready-To-Use IHC Kit

Catalog Number: **KHC2597**

## General Information

Sample type:  
FFPE tissue  
Cited sample type:  
Reactivity:  
Human, Mouse, Rat  
Cited Reactivity:

Assay type:  
Immunohistochemistry  
Primary antibody type:  
Rabbit Polyclonal  
Secondary antibody type:  
Polymer-HRP-Goat anti-Rabbit

## Kit Component

Component	Size	Concentration
Antigen Retrieval Buffer	100 mL	50×
Washing Buffer	100 mL ×2	20×
Blocking Buffer	5 mL	RTU
Primary Antibody	5 mL	RTU
Secondary Antibody	5 mL	RTU
Chromogen Component A	0.2 mL	RTU
Chromogen Component B	4 mL	RTU
Signal Enhancer	5 mL	RTU
Counter Staining Reagent	5 mL	RTU
Mounting Media	5 mL	RTU
Control Slide	1 slide (Optional)	FFPE
Datasheet	1 Copy	
Manual	1 Copy	

## Storage Instructions

All the reagents are stored at 2-8°C. The kit is stable for 6 months from the date of receipt.

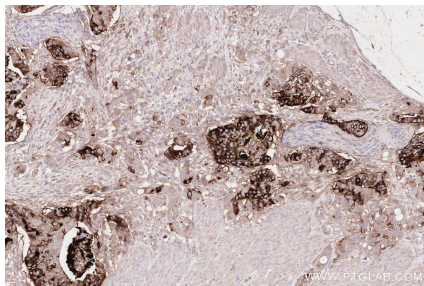
## Background

Olfactomedin-4 (OLFM4), also named as hGC-1 (human G-CSF-stimulated clone-1) or antiapoptotic protein GW112, is a secreted glycoprotein normally expressed in bone marrow, prostate, small intestine, stomach, colon and pancreas. OLFM4 has been found to be up-regulated in gastrointestinal cancer and inflammatory disease including inflammatory bowel disease and H. pylori infection. OLFM4 is involved in cellular process such as apoptosis, cell adhesion and tumor growth).

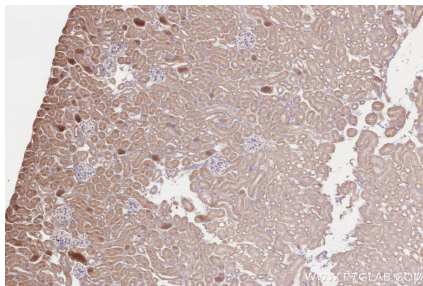
## Synonyms

OLFM4,Antiapoptotic protein GW112,bA209J19.1,GC1,G

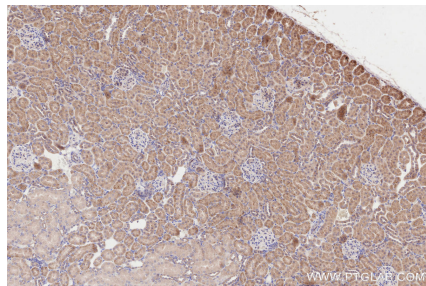
## Selected Validation Data



Immunohistochemical analysis of paraffin-embedded human stomach cancer tissue slide using KHC2597 (OLFM4 IHC Kit).



Immunohistochemical analysis of paraffin-embedded mouse kidney tissue slide using KHC2597 (OLFM4 IHC Kit).



Immunohistochemical analysis of paraffin-embedded rat kidney tissue slide using KHC2597 (OLFM4 IHC Kit).