

IHCeasy PHF17 Ready-To-Use IHC Kit

Catalog Number: **KHC2579**

General Information

Sample type:
FFPE tissue
Cited sample type:
Reactivity:
Human, Mouse, Rat
Cited Reactivity:

Assay type:
Immunohistochemistry
Primary antibody type:
Rabbit Polyclonal
Secondary antibody type:
Polymer-HRP-Goat anti-Rabbit

Kit Component

Component	Size	Concentration
Antigen Retrieval Buffer	100 mL	50×
Washing Buffer	100 mL ×2	20×
Blocking Buffer	5 mL	RTU
Primary Antibody	5 mL	RTU
Secondary Antibody	5 mL	RTU
Chromogen Component A	0.2 mL	RTU
Chromogen Component B	4 mL	RTU
Signal Enhancer	5 mL	RTU
Counter Staining Reagent	5 mL	RTU
Mounting Media	5 mL	RTU
Control Slide	1 slide (Optional)	FFPE
Datasheet	1 Copy	
Manual	1 Copy	

Storage Instructions

All the reagents are stored at 2-8°C. The kit is stable for 6 months from the date of receipt.

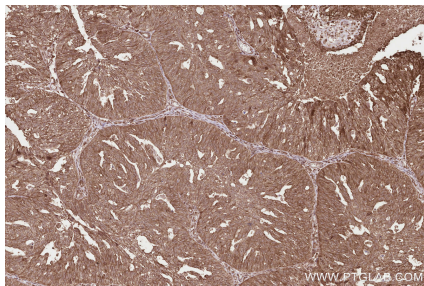
Background

PHF17 was identified as a protein partner of the von Hippel-Lindau tumor suppressor pVHL. It is one component of the HBO1 complex which has a histone H4-specific acetyltransferase activity, a reduced activity toward histone H3 and is responsible for the bulk of histone H4 acetylation in vivo. It can act as a transcriptional coactivator that promote acetylation of nucleosomal histone H4 by KAT5. In addition, it ubiquitinates both phosphorylated and non-phosphorylated β -catenin and therefore regulates canonical Wnt signaling in both Wnt-off and Wnt-on phases.

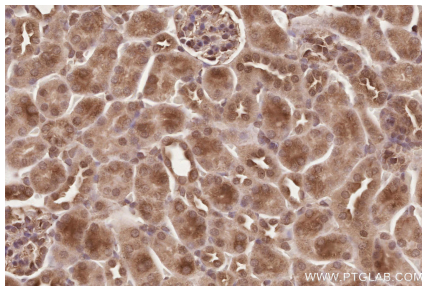
Synonyms

PHF17, Jade family PHD finger protein 1, JADE1, PHF 1

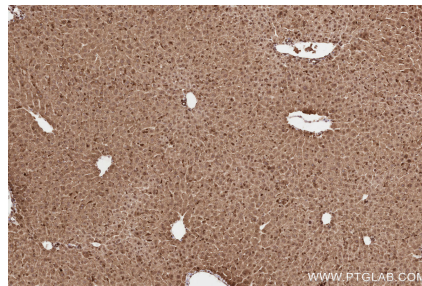
Selected Validation Data



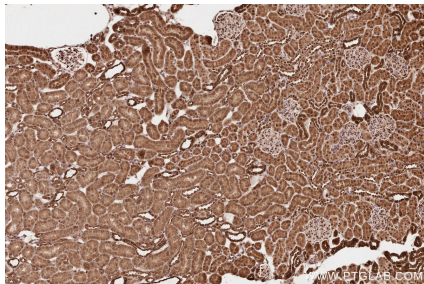
Immunohistochemical analysis of paraffin-embedded human ovary cancer tissue slide using KHC2579 (PHF17 IHC Kit).



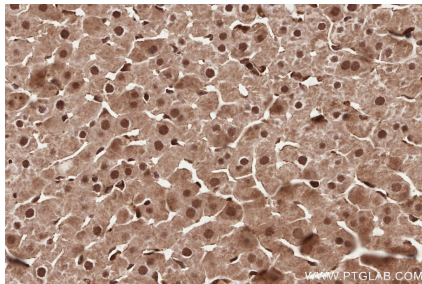
Immunohistochemical analysis of paraffin-embedded mouse kidney tissue slide using KHC2579 (PHF17 IHC Kit).



Immunohistochemical analysis of paraffin-embedded mouse liver tissue slide using KHC2579 (PHF17 IHC Kit).



Immunohistochemical analysis of paraffin-embedded rat kidney tissue slide using KHC2579 (PHF17 IHC Kit).



Immunohistochemical analysis of paraffin-embedded rat liver tissue slide using KHC2579 (PHF17 IHC Kit).