

IHC*easy* RNF123 Ready-To-Use IHC Kit

Catalog Number: **KHC2566**

General Information

Sample type:
FFPE tissue
Cited sample type:
Reactivity:
Human, Mouse, Rat
Cited Reactivity:

Assay type:
Immunohistochemistry
Primary antibody type:
Rabbit Polyclonal
Secondary antibody type:
Polymer-HRP-Goat anti-Rabbit

Kit Component

Component	Size	Concentration
Antigen Retrieval Buffer	100 mL	50×
Washing Buffer	100 mL ×2	20×
Blocking Buffer	5 mL	RTU
Primary Antibody	5 mL	RTU
Secondary Antibody	5 mL	RTU
Chromogen Component A	0.2 mL	RTU
Chromogen Component B	4 mL	RTU
Signal Enhancer	5 mL	RTU
Counter Staining Reagent	5 mL	RTU
Mounting Media	5 mL	RTU
Control Slide	1 slide (Optional)	FFPE
Datasheet	1 Copy	
Manual	1 Copy	

Storage Instructions

All the reagents are stored at 2-8°C. The kit is stable for 6 months from the date of receipt.

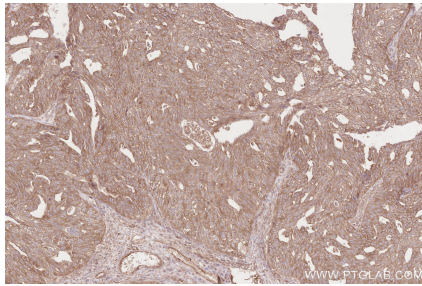
Background

RING finger protein 123 (RNF123), also known as KPC1, is an E3 ubiquitin ligase that belongs to the RING-finger family of ligases that contain a 40-60-amino acid long RING domain which is essential for causing substrate ubiquitination. RNF123 promoted TLR3/IRF7-induced type I IFN signaling and inhibited viral replication by degrading SOCS1.

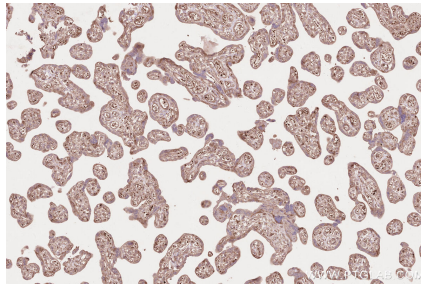
Synonyms

RNF123,FP1477,KPC1,ring finger protein 123

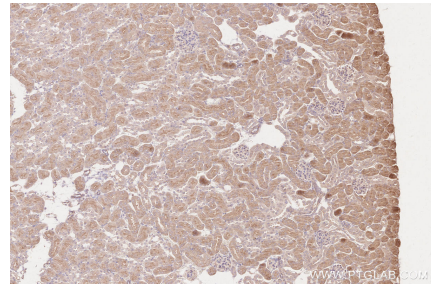
Selected Validation Data



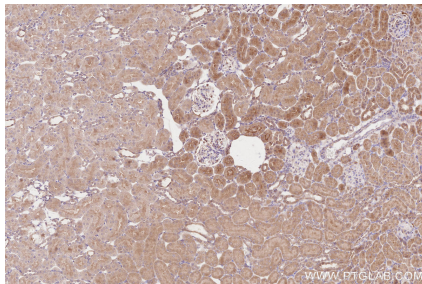
Immunohistochemical analysis of paraffin-embedded human ovary cancer tissue slide using KHC2566 (RNF123 IHC Kit).



Immunohistochemical analysis of paraffin-embedded human placenta tissue slide using KHC2566 (RNF123 IHC Kit).



Immunohistochemical analysis of paraffin-embedded mouse kidney tissue slide using KHC2566 (RNF123 IHC Kit).



Immunohistochemical analysis of paraffin-embedded rat kidney tissue slide using KHC2566 (RNF123 IHC Kit).