

IHC*easy* MLK4 Ready-To-Use IHC Kit

Catalog Number: **KHC2558**

General Information

Sample type:
FFPE tissue
Cited sample type:
Reactivity:
Human, Mouse
Cited Reactivity:

Assay type:
Immunohistochemistry
Primary antibody type:
Rabbit Polyclonal
Secondary antibody type:
Polymer-HRP-Goat anti-Rabbit

Kit Component

| Component | Size | Concentration |
|--------------------------|--------------------|---------------|
| Antigen Retrieval Buffer | 100 mL | 50× |
| Washing Buffer | 100 mL ×2 | 20× |
| Blocking Buffer | 5 mL | RTU |
| Primary Antibody | 5 mL | RTU |
| Secondary Antibody | 5 mL | RTU |
| Chromogen Component A | 0.2 mL | RTU |
| Chromogen Component B | 4 mL | RTU |
| Signal Enhancer | 5 mL | RTU |
| Counter Staining Reagent | 5 mL | RTU |
| Mounting Media | 5 mL | RTU |
| Control Slide | 1 slide (Optional) | FFPE |
| Datasheet | 1 Copy | |
| Manual | 1 Copy | |

Storage Instructions

All the reagents are stored at 2-8°C. The kit is stable for 6 months from the date of receipt.

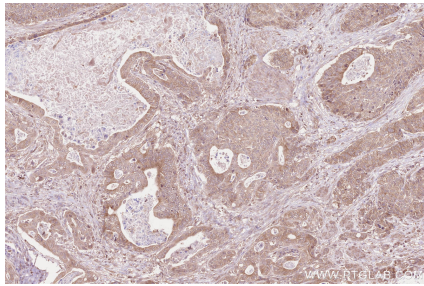
Background

MLK4 belongs to the MAP kinase kinase kinase subfamily. The MLK family members are characterized by the presence of signature sequences of Ser/Thr and Tyr kinases within their catalytic domain. The MLK1-4 contains an aminoterminal Src-Homology (SH3) domain, followed by the kinase domain, a leucine-zipper region, and a Cdc42/Rac-interactive binding (CRIB) motif. MLK4 expressed in two splicing variants, MLK4^α and MLK4^β. The difference of these two isoforms is located in their C-terminal portion. The negative effect of MLK4 on LPS-induced ERK and JNK activation could be very important in controlling the level of cytokine expression, and thus maintaining the balance of inflammatory responses.

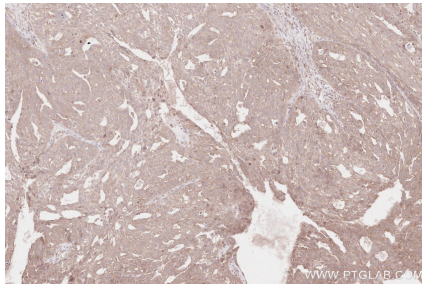
Synonyms

MLK4, EC:2.7.11.25, KIAA1804, MAP3K21, Mitogen-activat

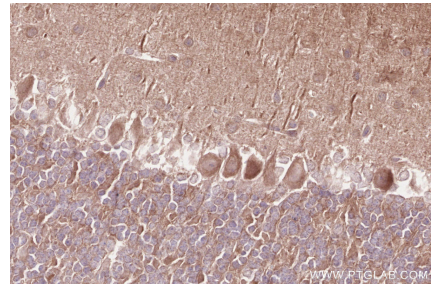
Selected Validation Data



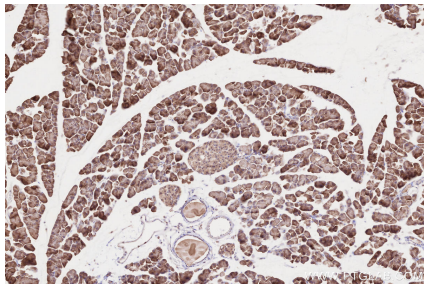
Immunohistochemical analysis of paraffin-embedded human stomach cancer tissue slide using KHC2558 (MLK4 IHC Kit).



Immunohistochemical analysis of paraffin-embedded human ovary cancer tissue slide using KHC2558 (MLK4 IHC Kit).



Immunohistochemical analysis of paraffin-embedded mouse cerebellum tissue slide using KHC2558 (MLK4 IHC Kit).



Immunohistochemical analysis of paraffin-embedded mouse pancreas tissue slide using KHC2558 (MLK4 IHC Kit).