

IHC*easy* PLK5P Ready-To-Use IHC Kit

Catalog Number: **KHC2529**

General Information

Sample type:
FFPE tissue
Cited sample type:
Reactivity:
Human, Mouse, Rat
Cited Reactivity:

Assay type:
Immunohistochemistry
Primary antibody type:
Rabbit Polyclonal
Secondary antibody type:
Polymer-HRP-Goat anti-Rabbit

Kit Component

| Component | Size | Concentration |
|--------------------------|--------------------|---------------|
| Antigen Retrieval Buffer | 100 mL | 50× |
| Washing Buffer | 100 mL ×2 | 20× |
| Blocking Buffer | 5 mL | RTU |
| Primary Antibody | 5 mL | RTU |
| Secondary Antibody | 5 mL | RTU |
| Chromogen Component A | 0.2 mL | RTU |
| Chromogen Component B | 4 mL | RTU |
| Signal Enhancer | 5 mL | RTU |
| Counter Staining Reagent | 5 mL | RTU |
| Mounting Media | 5 mL | RTU |
| Control Slide | 1 slide (Optional) | FFPE |
| Datasheet | 1 Copy | |
| Manual | 1 Copy | |

Storage Instructions

All the reagents are stored at 2-8°C. The kit is stable for 6 months from the date of receipt.

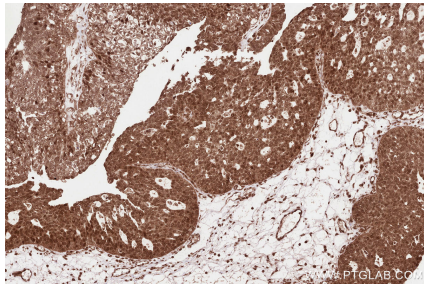
Background

PLK5, also named as PLK5P, is an inactive serine/threonine-protein kinase that plays a role in cell cycle progression and neuronal differentiation. Compared with mouse Plk5, the protein kinase domain of human PLK5 is truncated. PLK5 is located in the cytoplasm and nucleus.

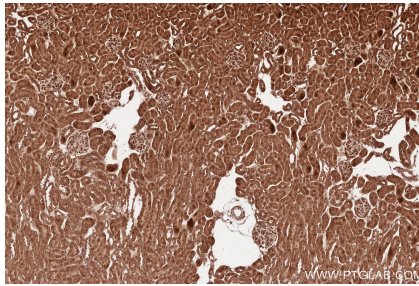
Synonyms

PLK5P, PLK5, polo like kinase 5 pseudogene

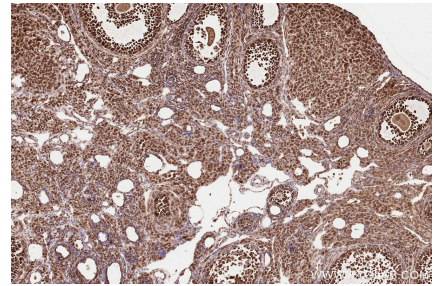
Selected Validation Data



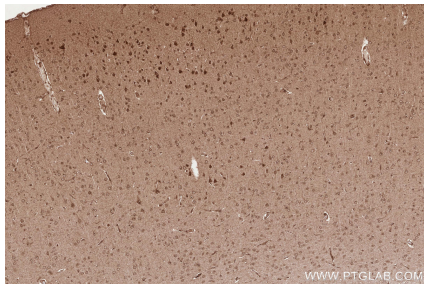
Immunohistochemical analysis of paraffin-embedded human ovary cancer tissue slide using KHC2529 (PLK5P IHC Kit).



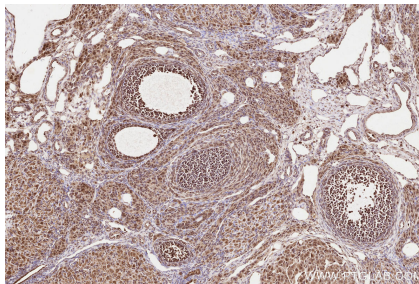
Immunohistochemical analysis of paraffin-embedded mouse kidney tissue slide using KHC2529 (PLK5P IHC Kit).



Immunohistochemical analysis of paraffin-embedded mouse ovary tissue slide using KHC2529 (PLK5P IHC Kit).



Immunohistochemical analysis of paraffin-embedded rat brain tissue slide using KHC2529 (PLK5P IHC Kit).



Immunohistochemical analysis of paraffin-embedded rat ovary tissue slide using KHC2529 (PLK5P IHC Kit).