

# IHC*easy* VAMP3/Cellubrevin Ready-To-Use IHC Kit

Catalog Number: **KHC2500**

## General Information

Sample type:  
FFPE tissue  
Cited sample type:  
Reactivity:  
Human, Mouse, Rat  
Cited Reactivity:

Assay type:  
Immunohistochemistry  
Primary antibody type:  
Rabbit Polyclonal  
Secondary antibody type:  
Polymer-HRP-Goat anti-Rabbit

## Kit Component

Component	Size	Concentration
Antigen Retrieval Buffer	100 mL	50×
Washing Buffer	100 mL ×2	20×
Blocking Buffer	5 mL	RTU
Primary Antibody	5 mL	RTU
Secondary Antibody	5 mL	RTU
Chromogen Component A	0.2 mL	RTU
Chromogen Component B	4 mL	RTU
Signal Enhancer	5 mL	RTU
Counter Staining Reagent	5 mL	RTU
Mounting Media	5 mL	RTU
Control Slide	1 slide (Optional)	FFPE
Datasheet	1 Copy	
Manual	1 Copy	

## Storage Instructions

All the reagents are stored at 2-8°C. The kit is stable for 6 months from the date of receipt.

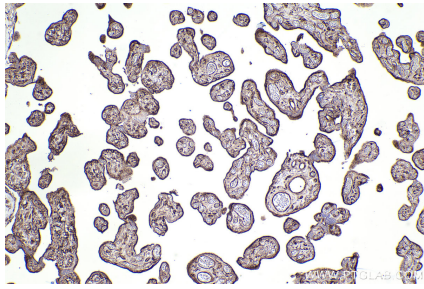
## Background

VAMP3, also named as cellubrevin or synaptobrevin 3, is a member of the vesicle-associated membrane protein (VAMP)/synaptobrevin family. VAMP3 is a v-SNARE (soluble NSF-attachment protein receptor). Characterized by a common sequence called the SNARE motif, SNARE proteins are involved in membrane fusion and vesicular transport. VAMP3 resides in recycling endosomes and endosome-derived transport vesicles, involved in regulating membrane traffic. It is implicated in recycling of transferrin receptors, secretion of alpha-granules in platelets, and membrane trafficking during cell migration.

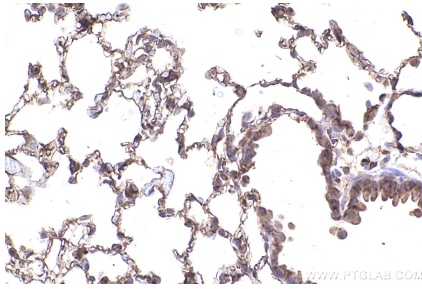
## Synonyms

VAMP3,CEB,Cellubrevin,SYB3,Synaptobrevin-3

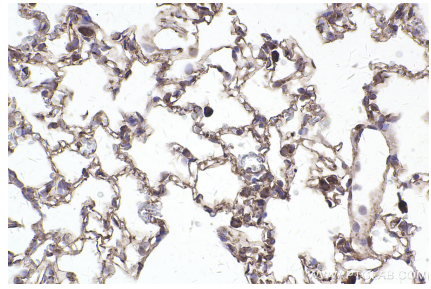
## Selected Validation Data



Immunohistochemical analysis of paraffin-embedded human placenta tissue slide using KHC2500 (VAMP3/Cellubrevin IHC Kit).



Immunohistochemical analysis of paraffin-embedded mouse lung tissue slide using KHC2500 (VAMP3/Cellubrevin IHC Kit).



Immunohistochemical analysis of paraffin-embedded rat lung tissue slide using KHC2500 (VAMP3/Cellubrevin IHC Kit).